

4th Quarter
December 1, 2015



Financials

- Cash Balance as of Sept. 30 **\$146,581.65**
- FYTD/1st Quarter Expenditures **\$27,571.05**
- CY15 Contributions as of Sept. 30 **\$11,295.00**

- Audit Complete
 - **Waiting for Auditor Report from State**

Old Business

- **Basin Updates**

Old Business

- Basin Updates
- St. Joseph River Basin Filter Strip Initiative



Bank Instability Results in More than Soil Loss

It's Not Just the Environment

Land along waterways can be filled with surprises. Unstable bank tops may be hidden by flowing water that has undercut the bank. Weight and vibration of heavy farm equipment might just be the formula for the remaining bank to collapse with the equipment still on it!

Filter strips provide that cushion of safety. Properly chosen plants, provide deep roots to strengthen the structure of the soil. The width of the filter strip insures that equipment will not get close to instability if undercutting occurs in the banks.

Eroded soils deposit in slow-flow areas down stream from their source. These deposits alter stream flow, resulting in upstream flooding or damage to the stream structure. This necessitates more frequent and more severe maintenance. Controlling soils before they enter streams and ditches, helps reduce the frequency and severity of drain maintenance—saving taxpayers money.

Who To Contact

For technical assistance and funding opportunities to develop and maintain a filter strip, contact your local **Natural Resource Conservation Service** and **Soil and Water Conservation District**.

For more information regarding Indiana's Filter Strip Law and tax assessment reductions, contact your **County Surveyor and Drainage Board** and **County Assessor**.



Filter Strips Protect Wildlife habitat

ST. JOSEPH RIVER BASIN COMMISSION

227 W. Jefferson Blvd. -- #1120
South Bend, IN 46601-1830
P: 574-287-1829
F: 574-239-4072
www.sjrbc.com

IMPROVING WATER QUALITY THROUGH GOOD CONSERVATION PRACTICES



IC
6-1.1-6.7
Indiana's
Filter
Strip Law

Old Business

- Basin Updates
- St. Joseph River Basin Filter Strip Initiative
- **IN Watershed Leadership Academy Scholarship**
 - **Randy Sexton, Noble County Surveyor**



Old Business

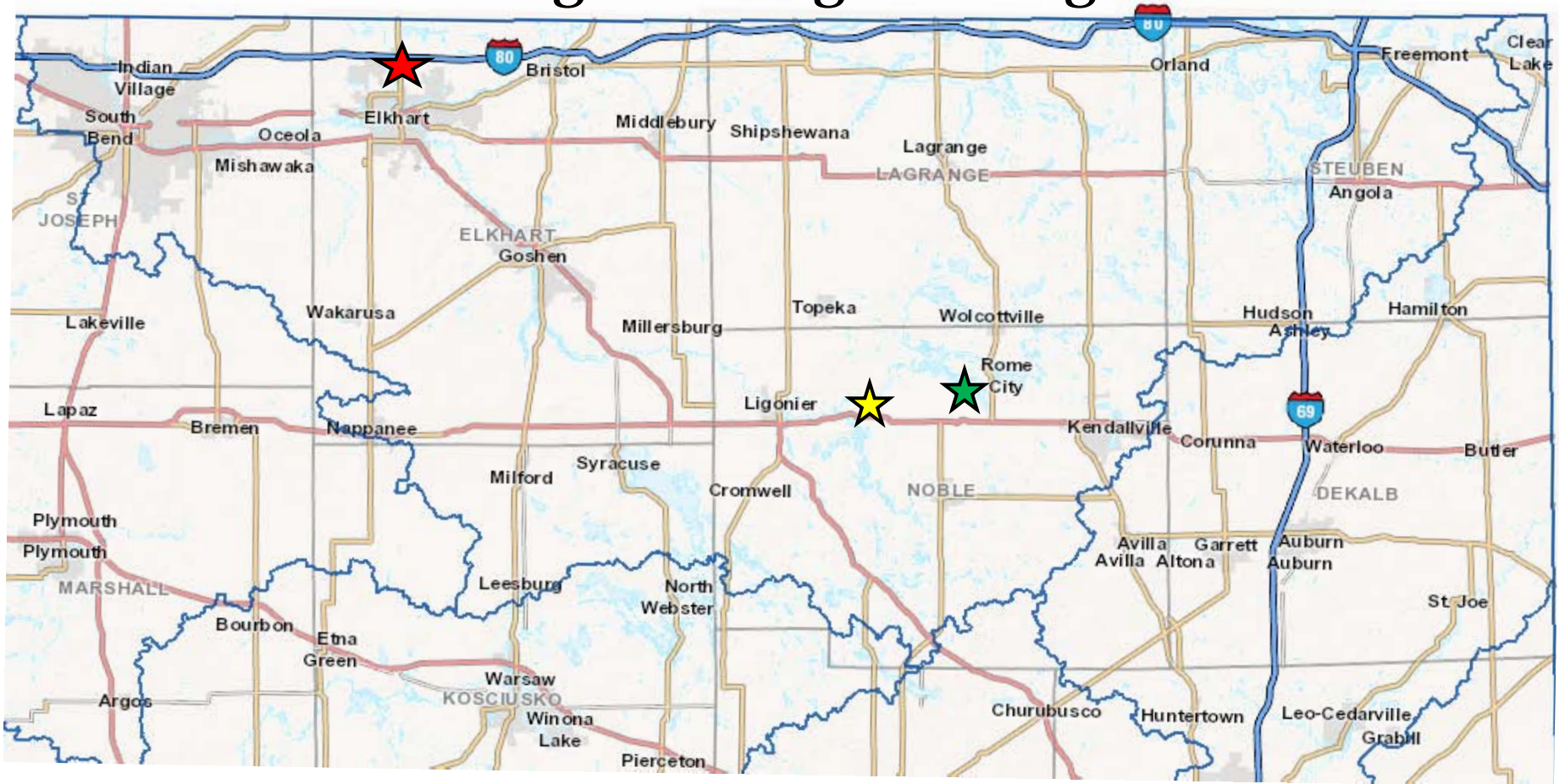
- Basin Updates
- St. Joseph River Basin Filter Strip Initiative
- IN Watershed Leadership Academy Scholarship
- **Cobus Creek Watershed Diagnostic Study**
 - **Need \$3,600 to fund Michigan monitoring**
 - **Stakeholder meeting January 2016**



Old Business

- Basin Updates
- St. Joseph River Basin Filter Strip Initiative
- IN Watershed Leadership Academy Scholarship
- Cobus Creek Watershed Diagnostic Study
- **Noble County Lake Gauges**

Gauges Losing Funding



★ Simonton Lake – Elkhart, IN

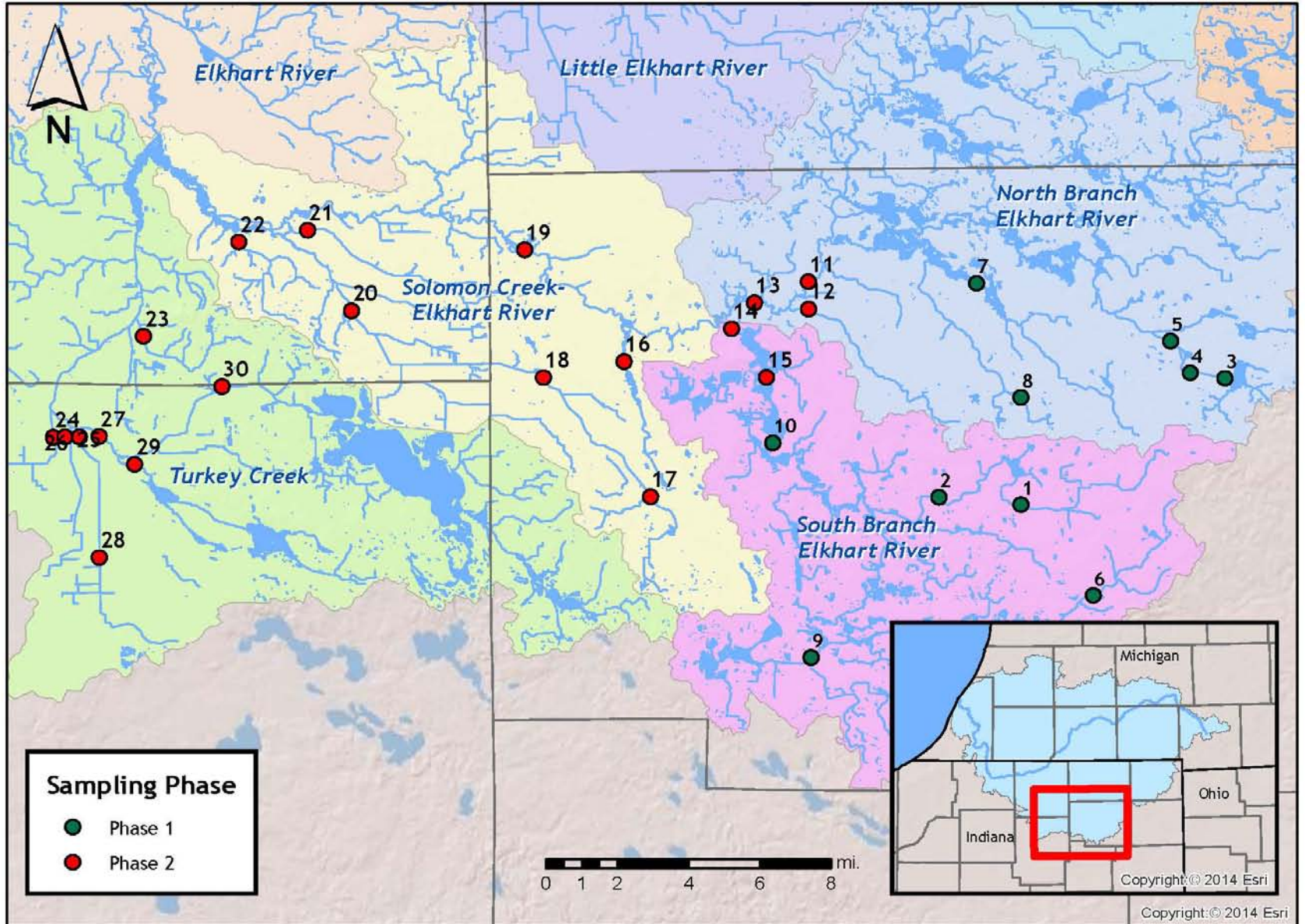
★ Sylvan Lake - Rome City, IN

★ Waldron Lake – Cosperville, IN

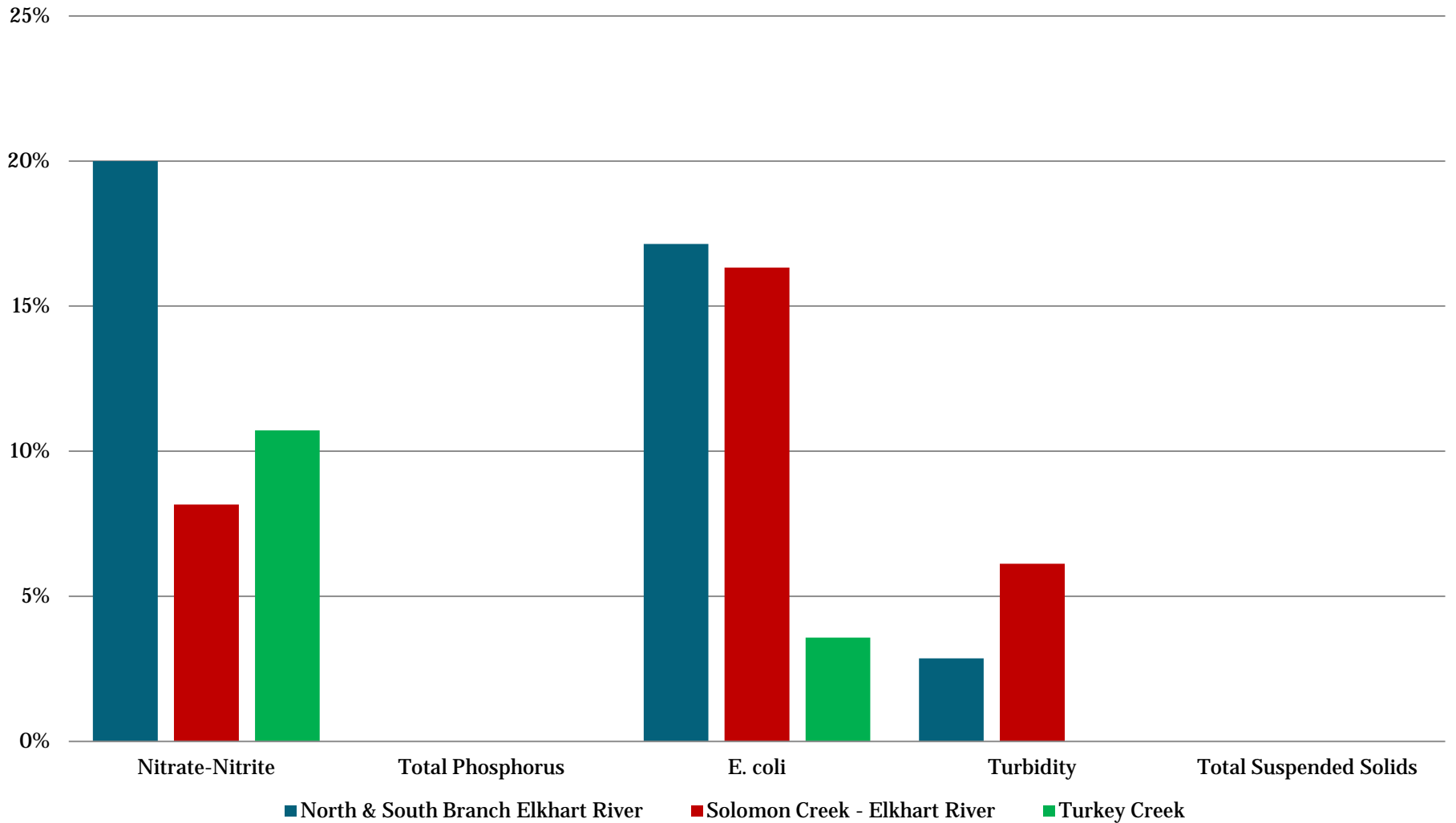
Old Business

- Basin Updates
- St. Joseph River Basin Filter Strip Initiative
- IN Watershed Leadership Academy Scholarship
- Cobus Creek Watershed Diagnostic Study
- Noble County Lake Gauges
- **Water Monitoring Program Update**

SJRBC Sampling Sites



Phase 2: April to October 2015 Percentage of Sample Events Exceeding Target Values by Subwatershed



New Business

- **Meeting Schedule for 2016**
 - **10am @ Elkhart Co. Public Services Building**
 - March 1, 2016
 - June 7, 2016
 - September 6, 2016
 - December 6, 2016

New Business

- Meeting Schedule for 2016
- **Election of 2016 Officers**
 - **President:** Jon Roberts
 - **Vice-President:** Paula Reinhold
 - **Secretary-Treasurer:** Martin Franke

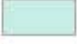

New Business

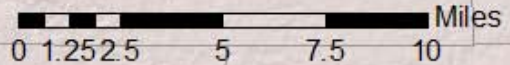
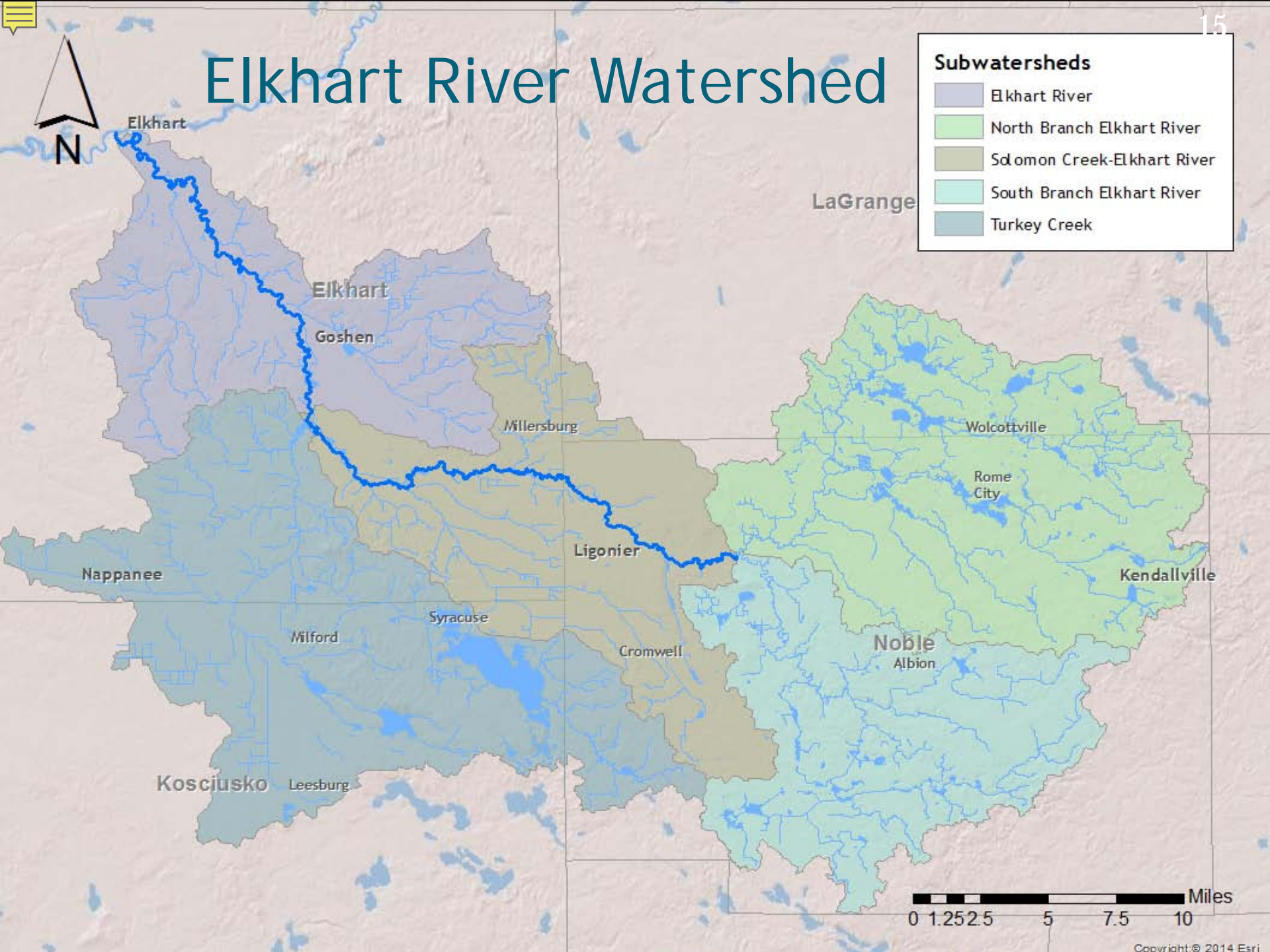
- Meeting Schedule for 2016
- Election of 2016 Officers
- **Elkhart River Watershed Conservation Initiative**

Elkhart River Watershed



Subwatersheds

-  Elkhart River
-  North Branch Elkhart River
-  Solomon Creek-Elkhart River
-  South Branch Elkhart River
-  Turkey Creek



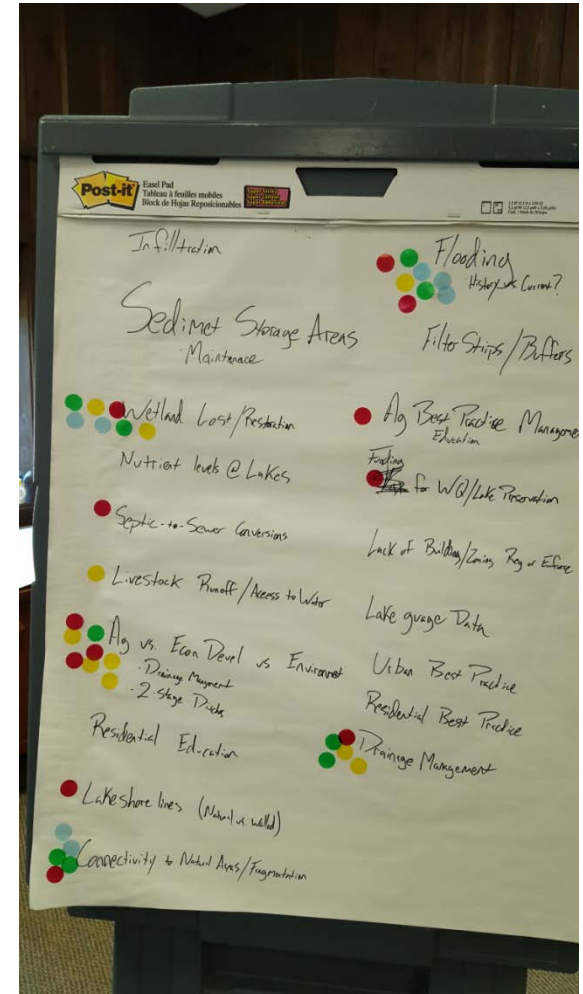
Elkhart River Watershed Conservation Initiative

- **A collaborative effort to mobilize projects listed in current plans/studies**
 - Identify large scale environmental issues in the watershed
 - Researching past plans/studies
 - Prioritizing projects
 - Identify responsibility & funding mechanisms for projects
 - Implementing projects
- **Focus on project implementation**

Elkhart River Watershed Conservation Initiative - Update

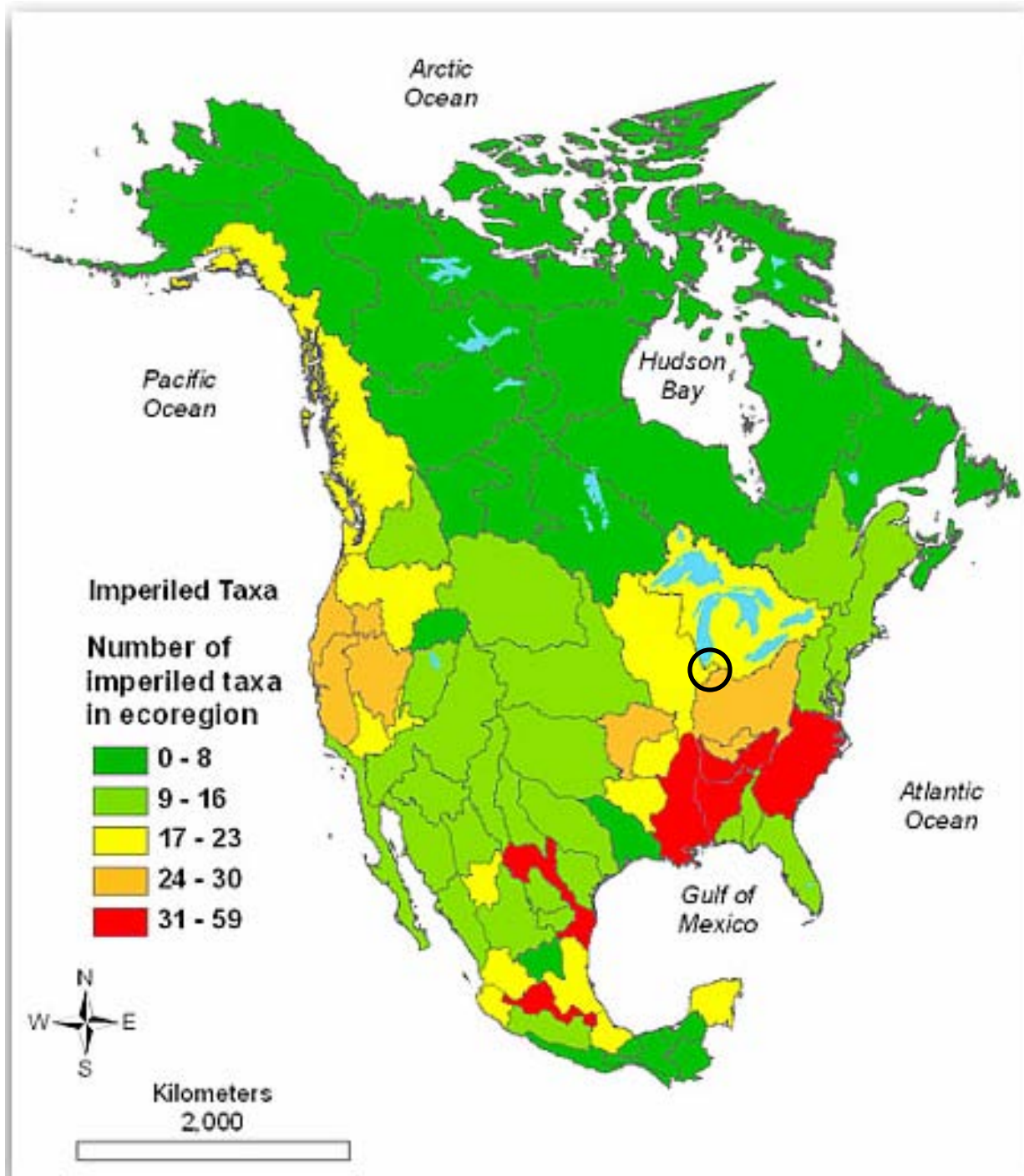
- Large-scale environmental concerns
 1. Natural lands restoration & protection
 2. Water quantity management
 3. Ag BMPs
 4. Residential & urban BMPs

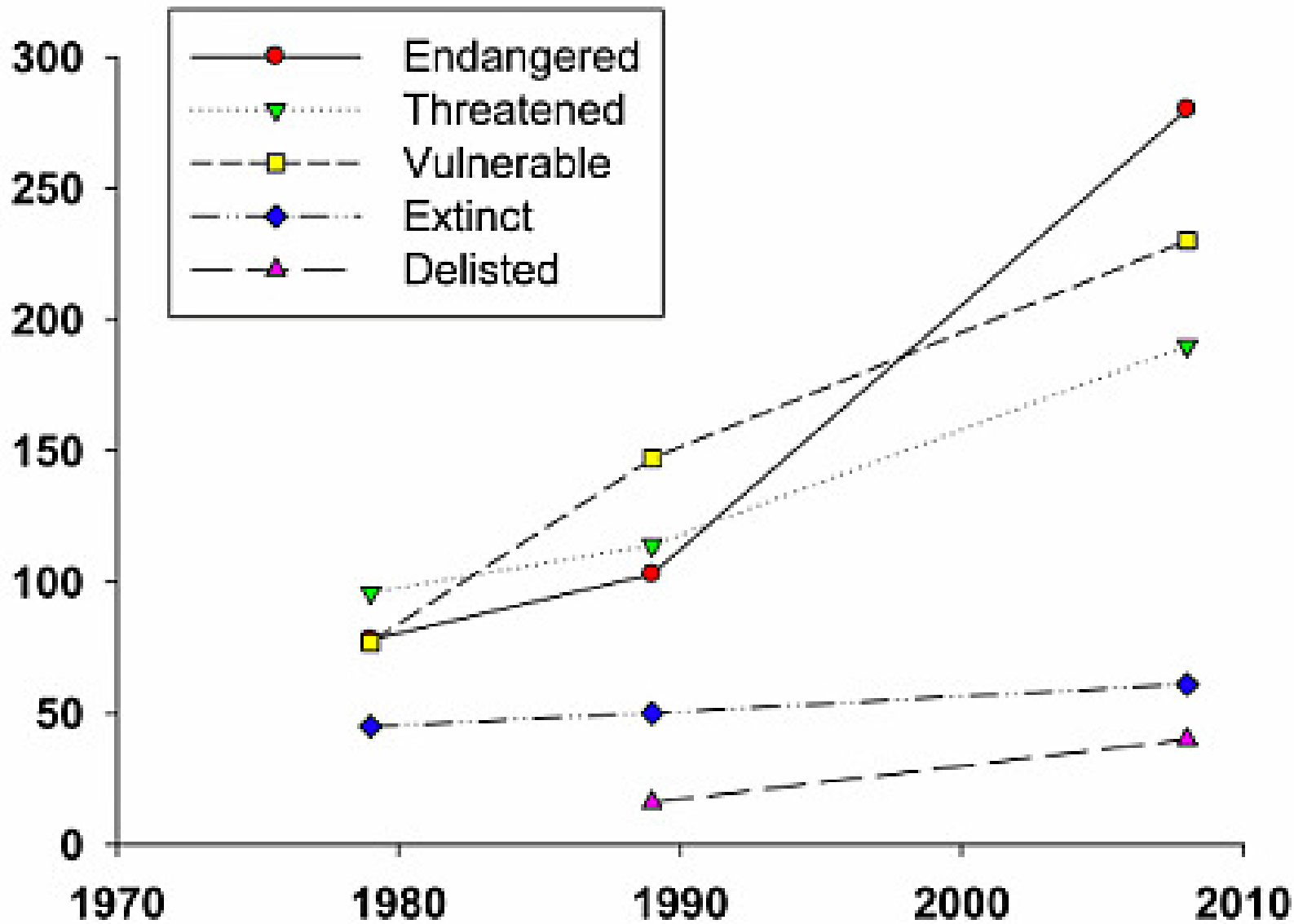
- Developing focus groups



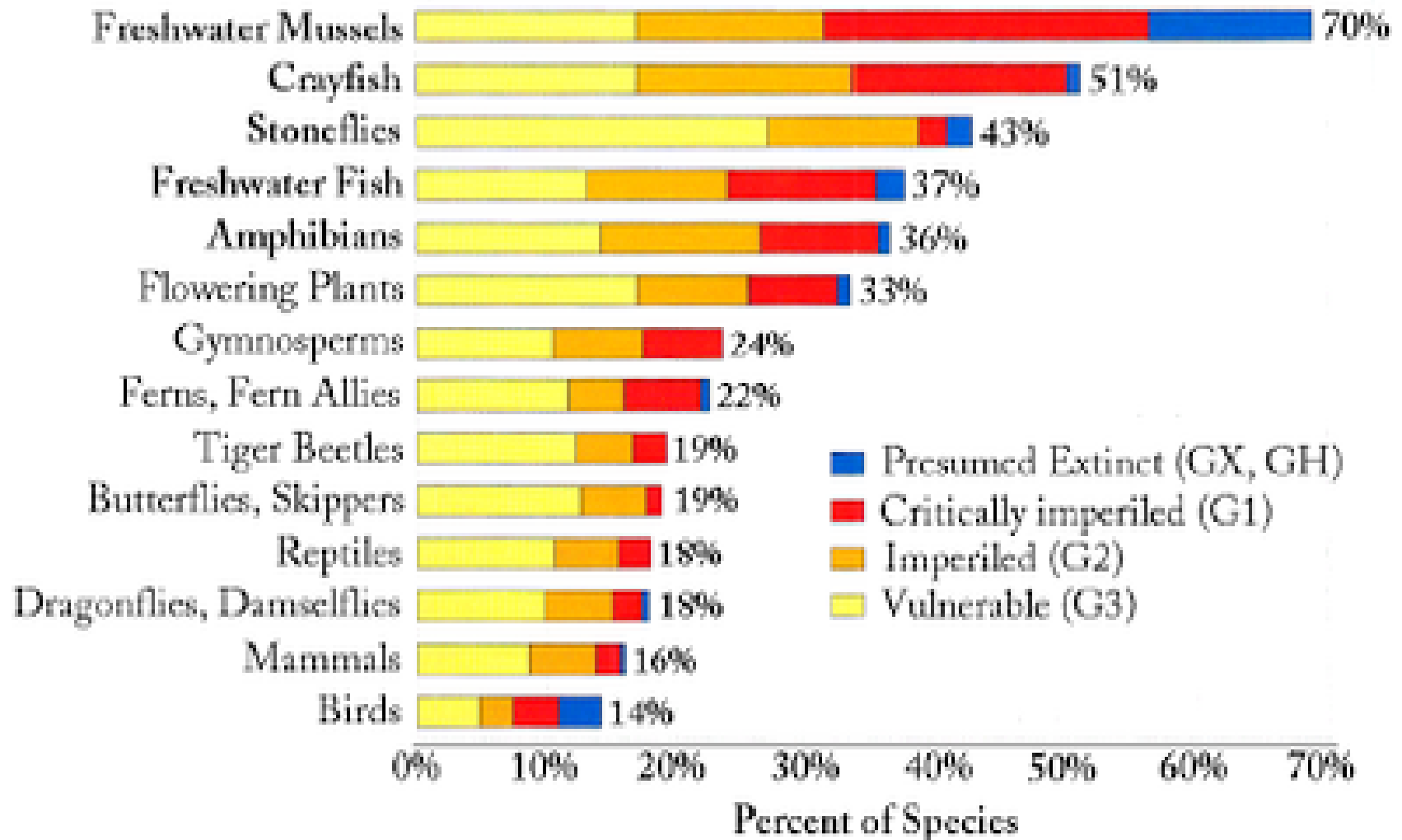
Christiana Creek Fish Passage Study



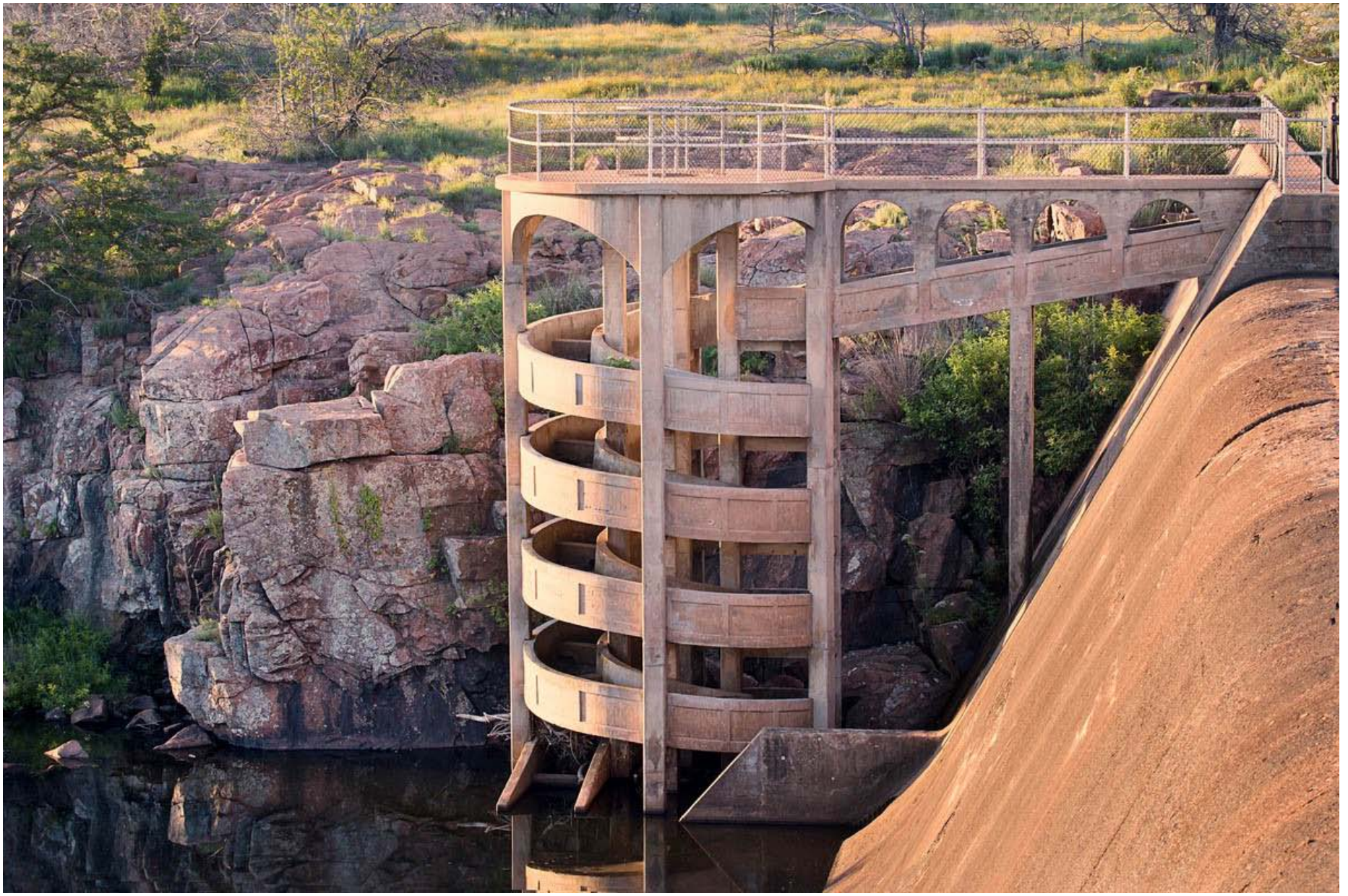


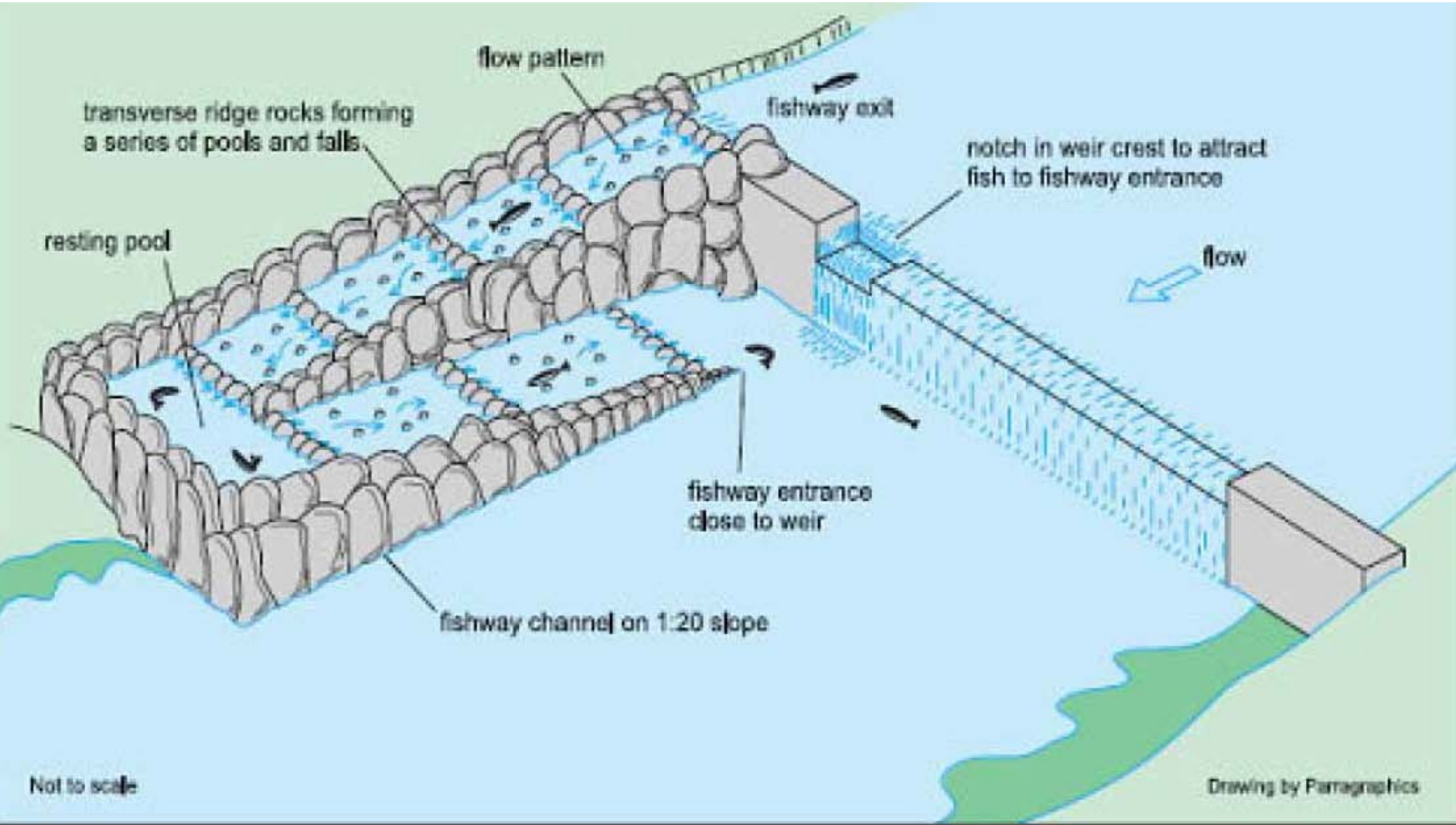


Endangered Species in North America



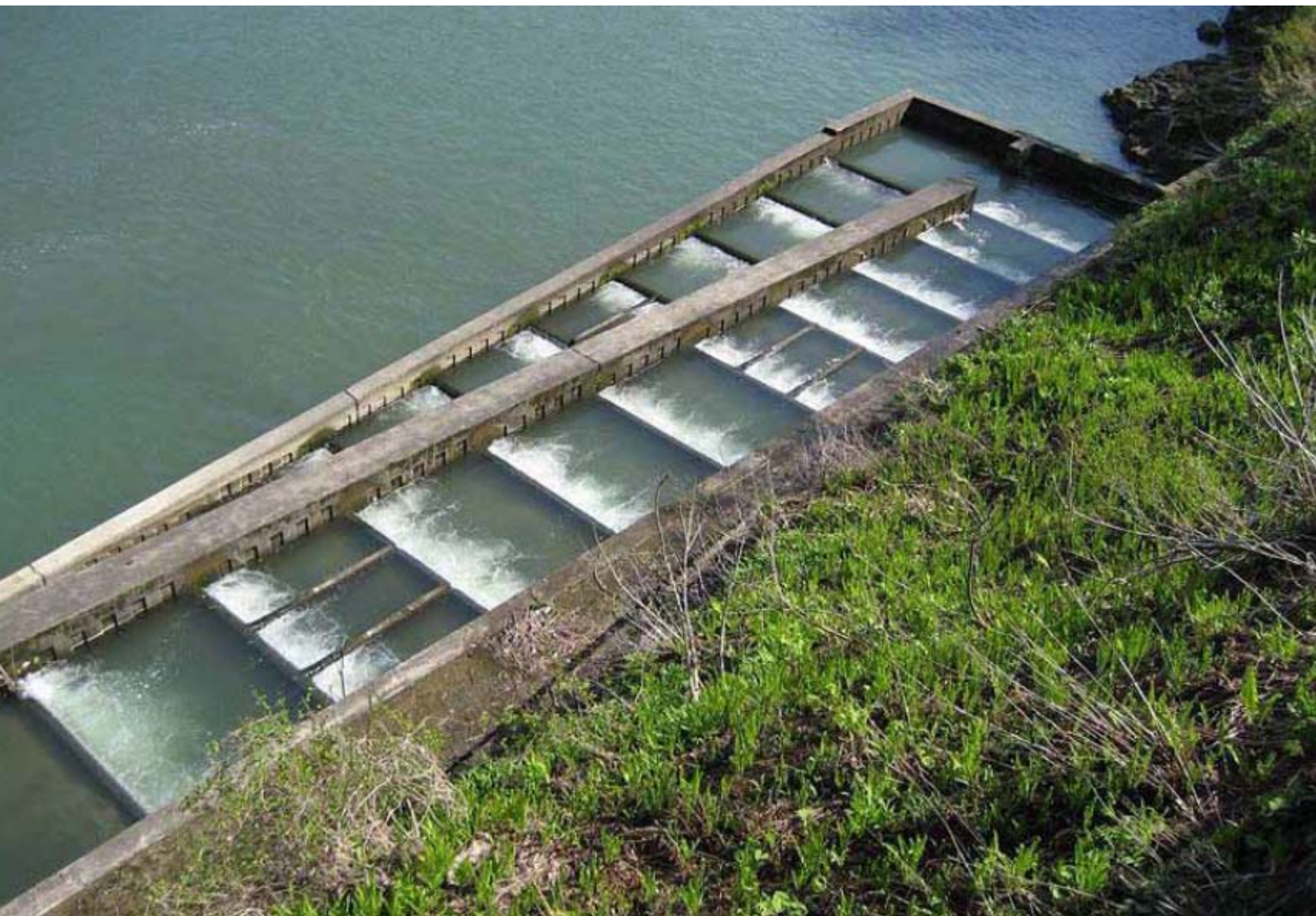
Stein et al. 2000



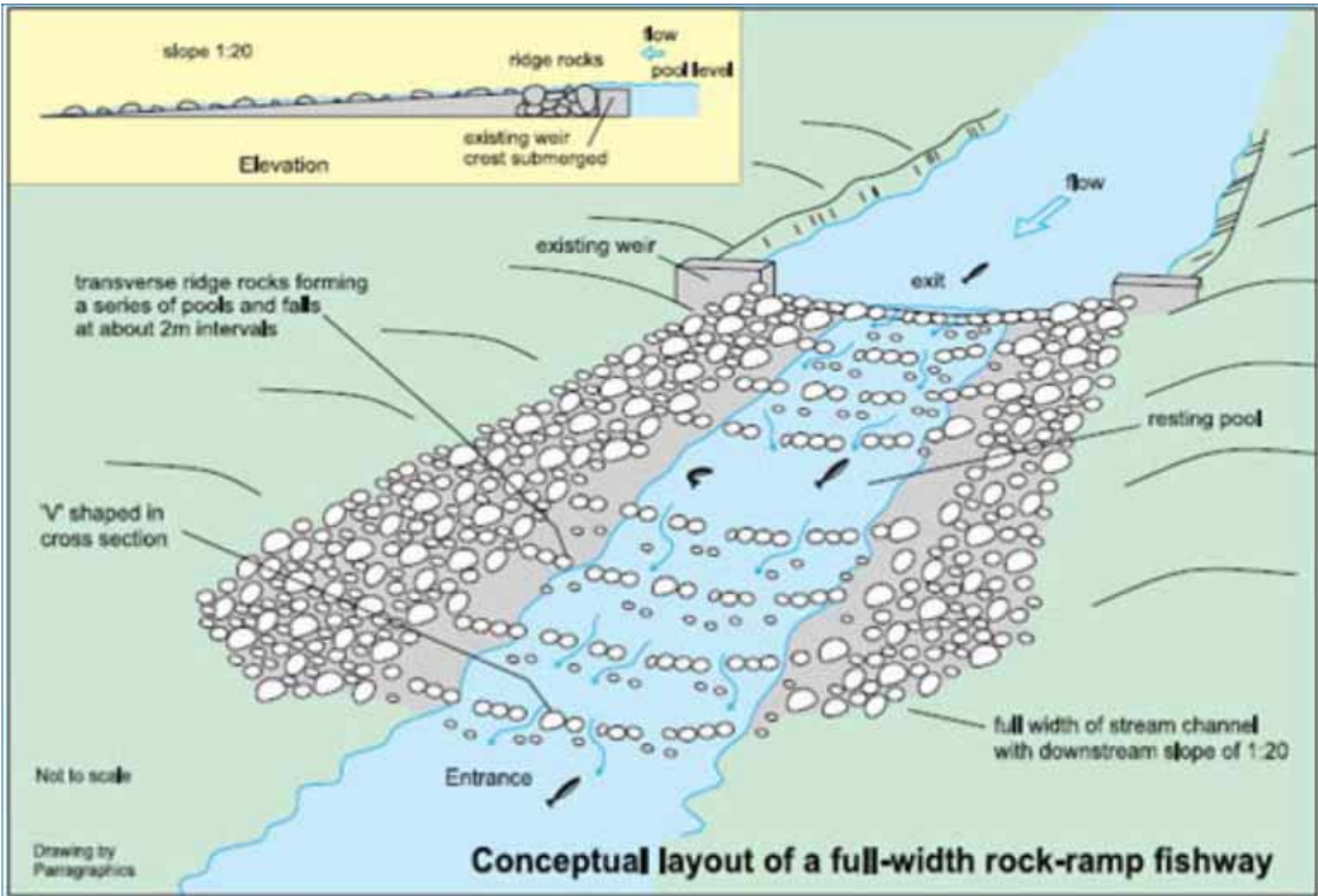


Not to scale

Drawing by Parragraphics









08/26/2008 11:05 am

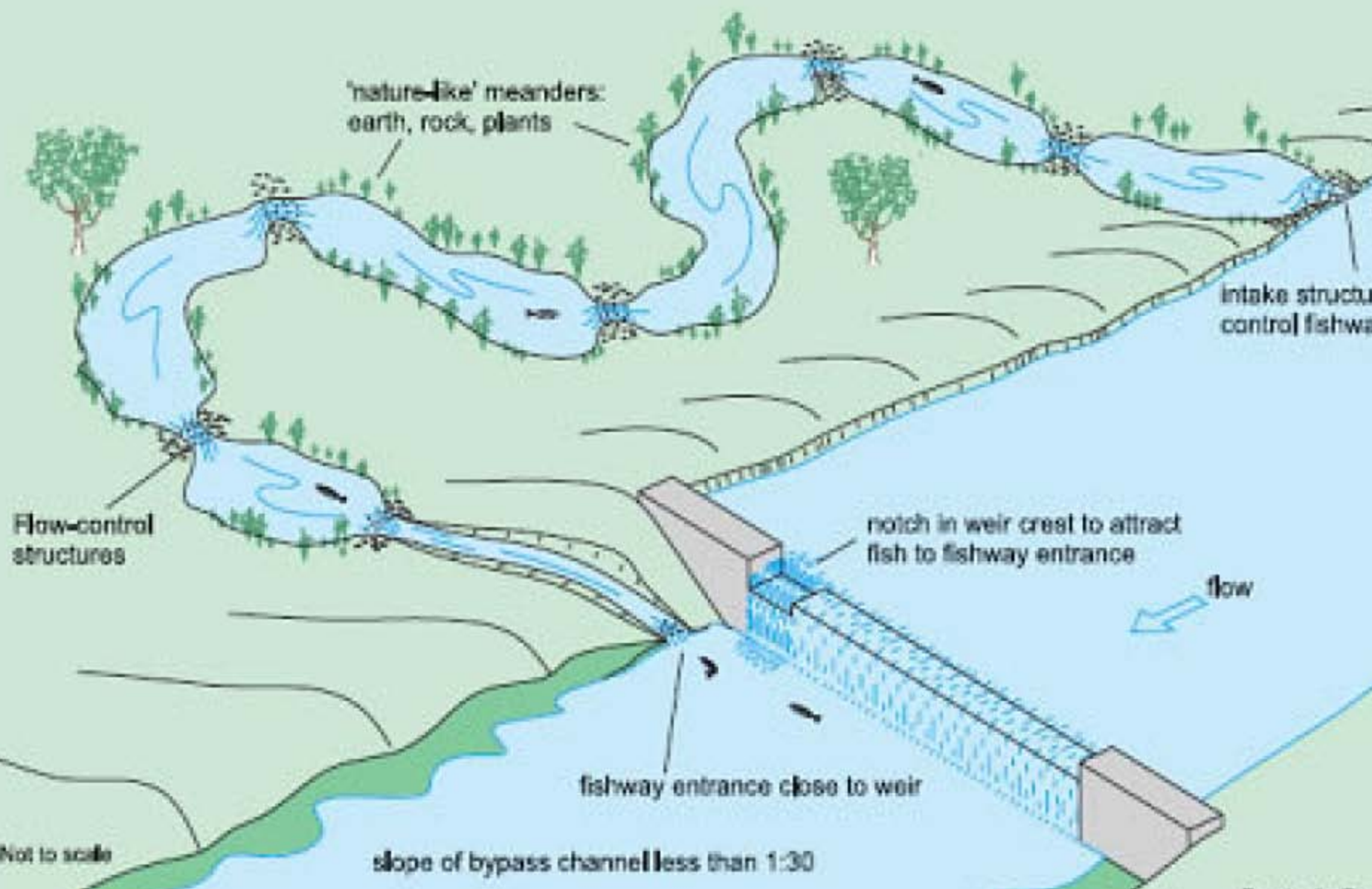


08/26/2008 11:49 am





Conceptual layout of a bypass fishway



Not to scale

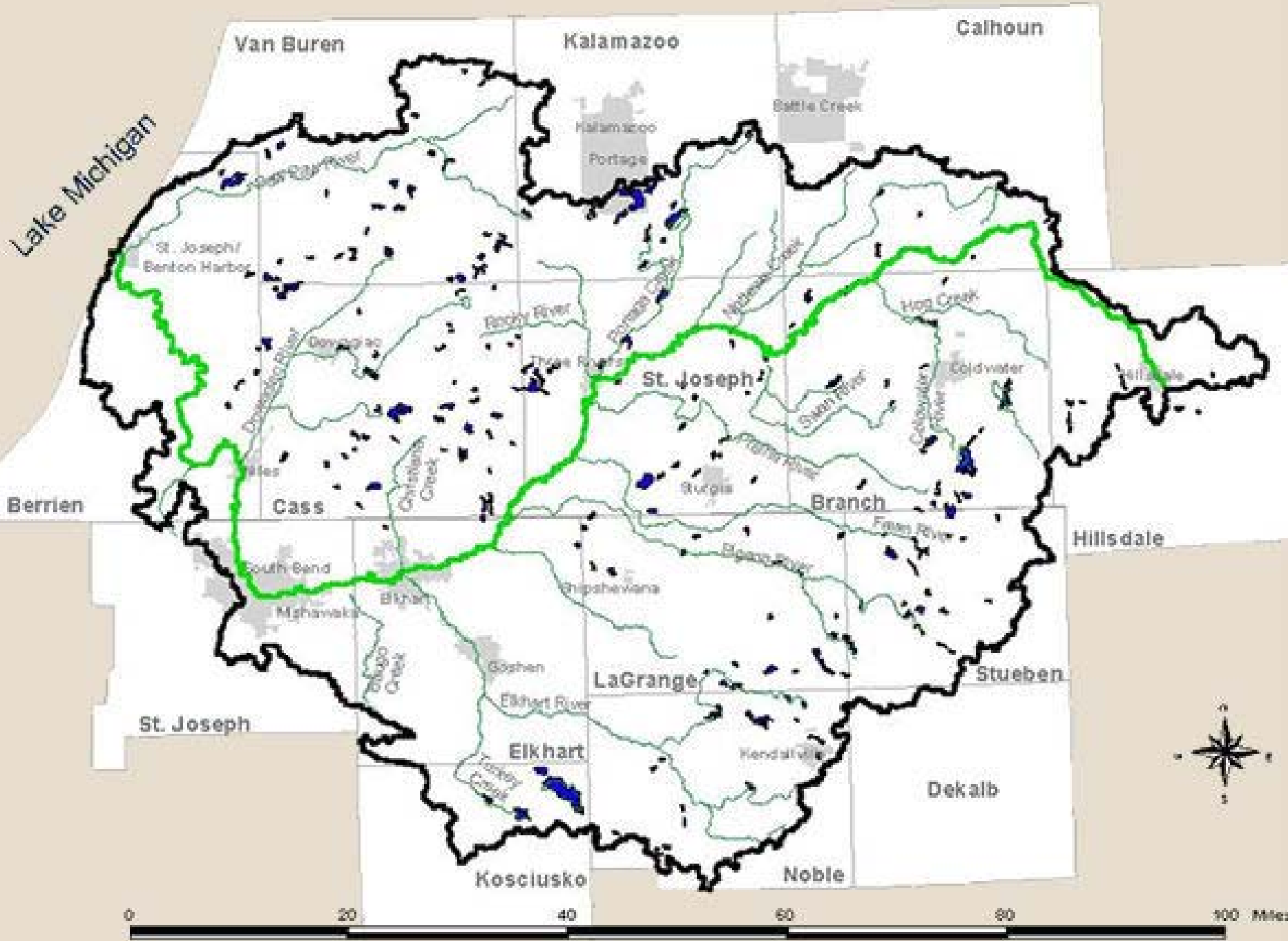
slope of bypass channel less than 1:30

Drawing by Parr...



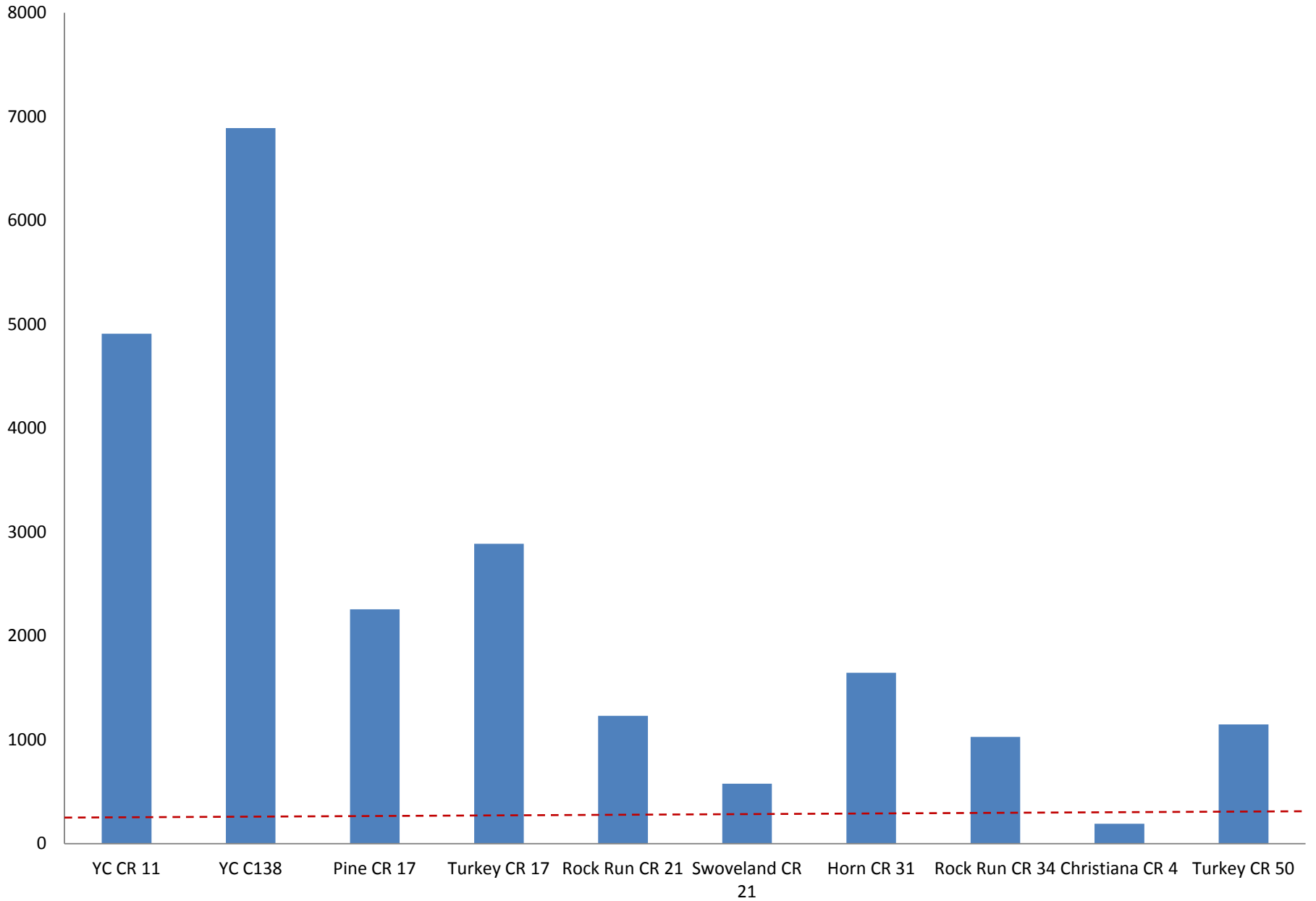
A GENERAL COMPARISON OF FISH PASSAGE ALTERNATIVES

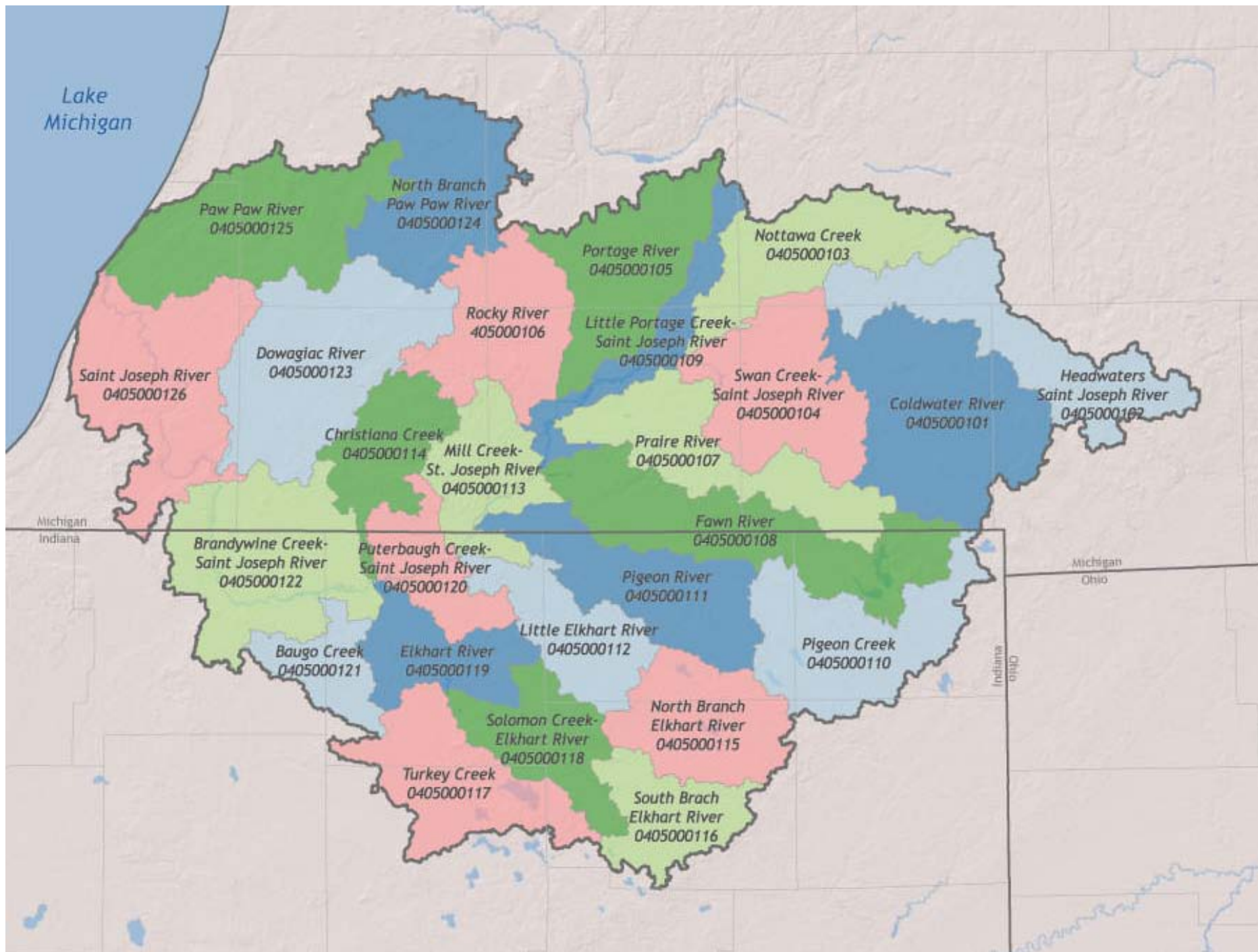
ALTERNATIVE	DESIRED GOAL					RELATIVE COST
	CREATE FISH PASSAGE	IMPROVED SAFETY	BOAT / CANOE PASSAGE	IMPROVE WATER QUALITY	RESTORE HABITAT	
FISH LADDER	GOOD					\$\$\$\$\$\$
ROCK RAMP	EXCELLENT	EXCELLENT	FAIR	GOOD	GOOD	\$\$\$\$
BYPASS CHANNEL	GOOD		FAIR	FAIR	FAIR	\$\$\$\$
COMPLETE REMOVAL	EXCELLENT	EXCELLENT	EXCELLENT	EXCELLENT	EXCELLENT	\$\$\$





E. Coli Average Conc.













Species - 18
Count - 147

Species - 15
Count - 131

Species - 8
Count - 48

Species - 23
Count - 275

Species - 30
Count - 496









E Beardsley Ave

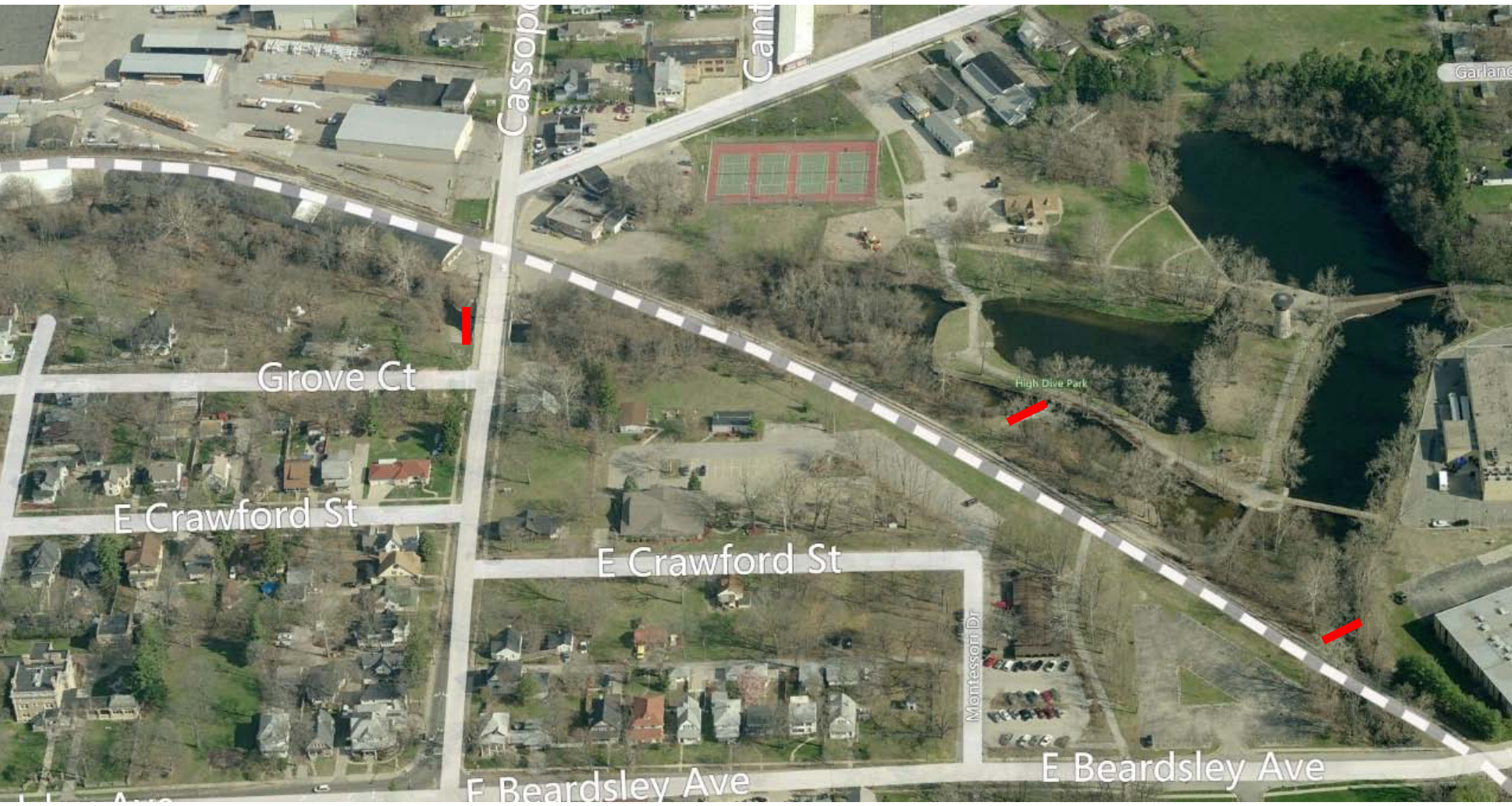
Crawford St

Montessori Dr Quincy St

High Dive Park







Cassopolis

Cant

Garland

Grove Ct

E Crawford St

E Crawford St

High Dive Park

E Beardsley Ave

E Beardsley Ave

Montessori Dr

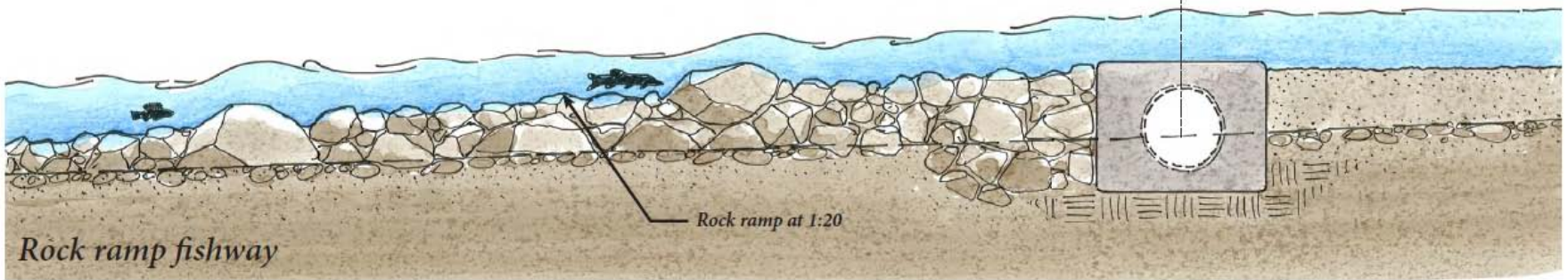
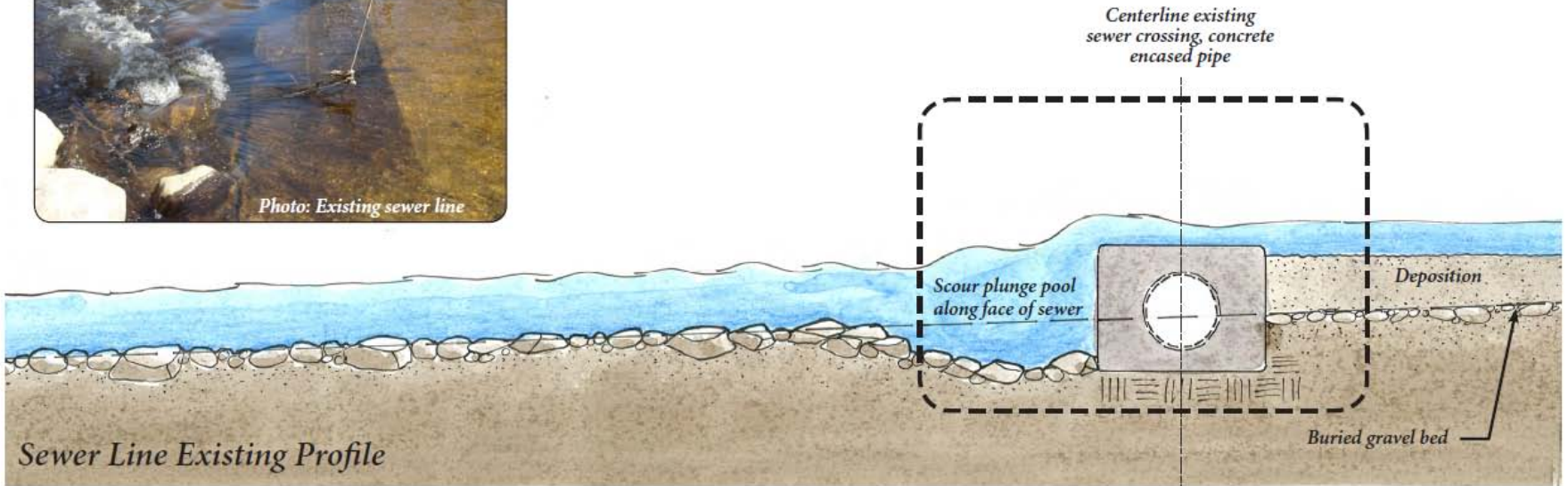


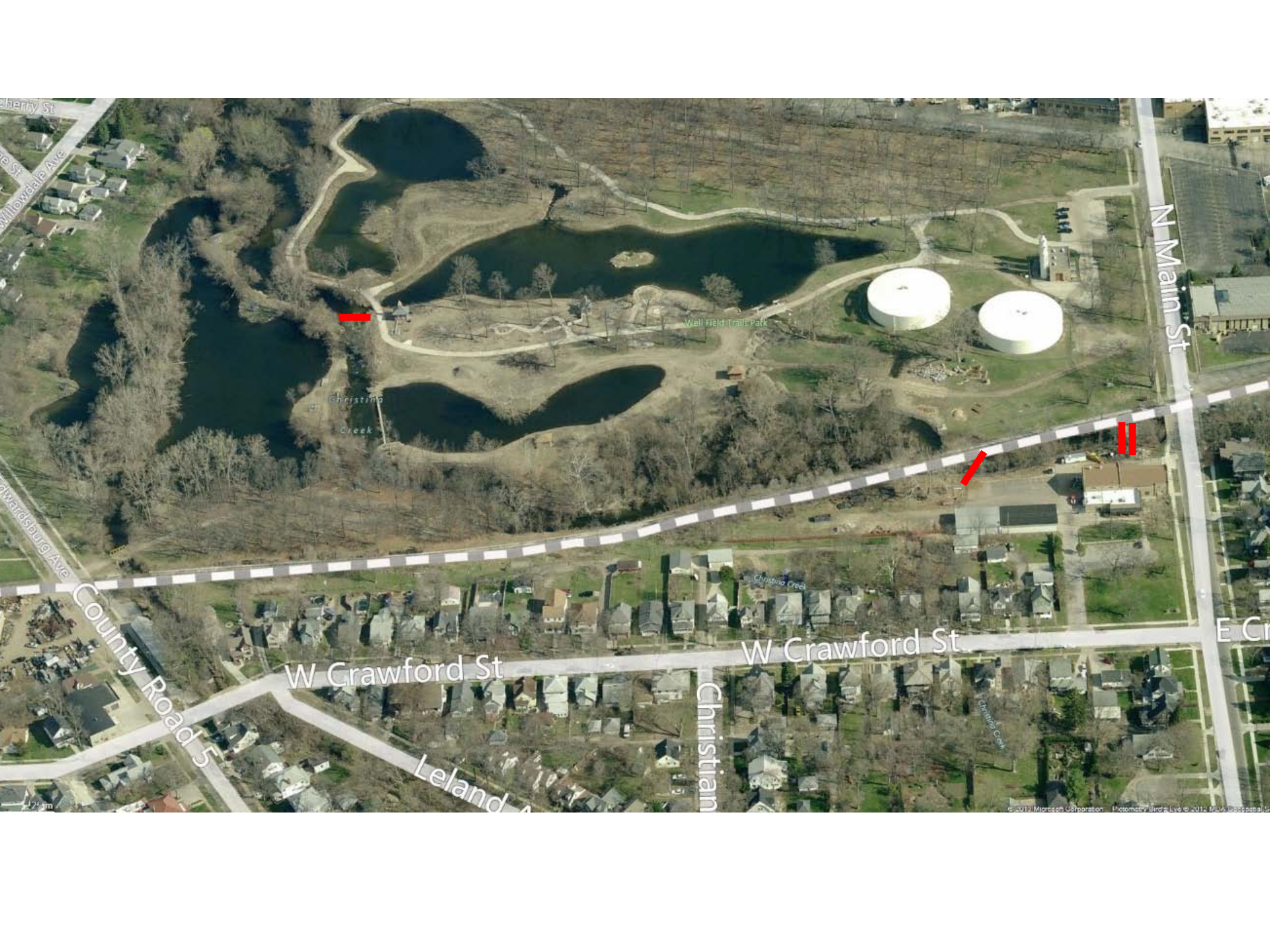
2010/09/17



Photo: Existing sewer line

Sewer Line Crossing Schematics





Cherry St

Willowdale Ave

Stwardsburg Ave

County Road 5

W Crawford St

Leland

Christian

W Crawford St

N Main St

E Cr

Well Field Trails Park

Christina Creek

Christina Creek

Christina Creek

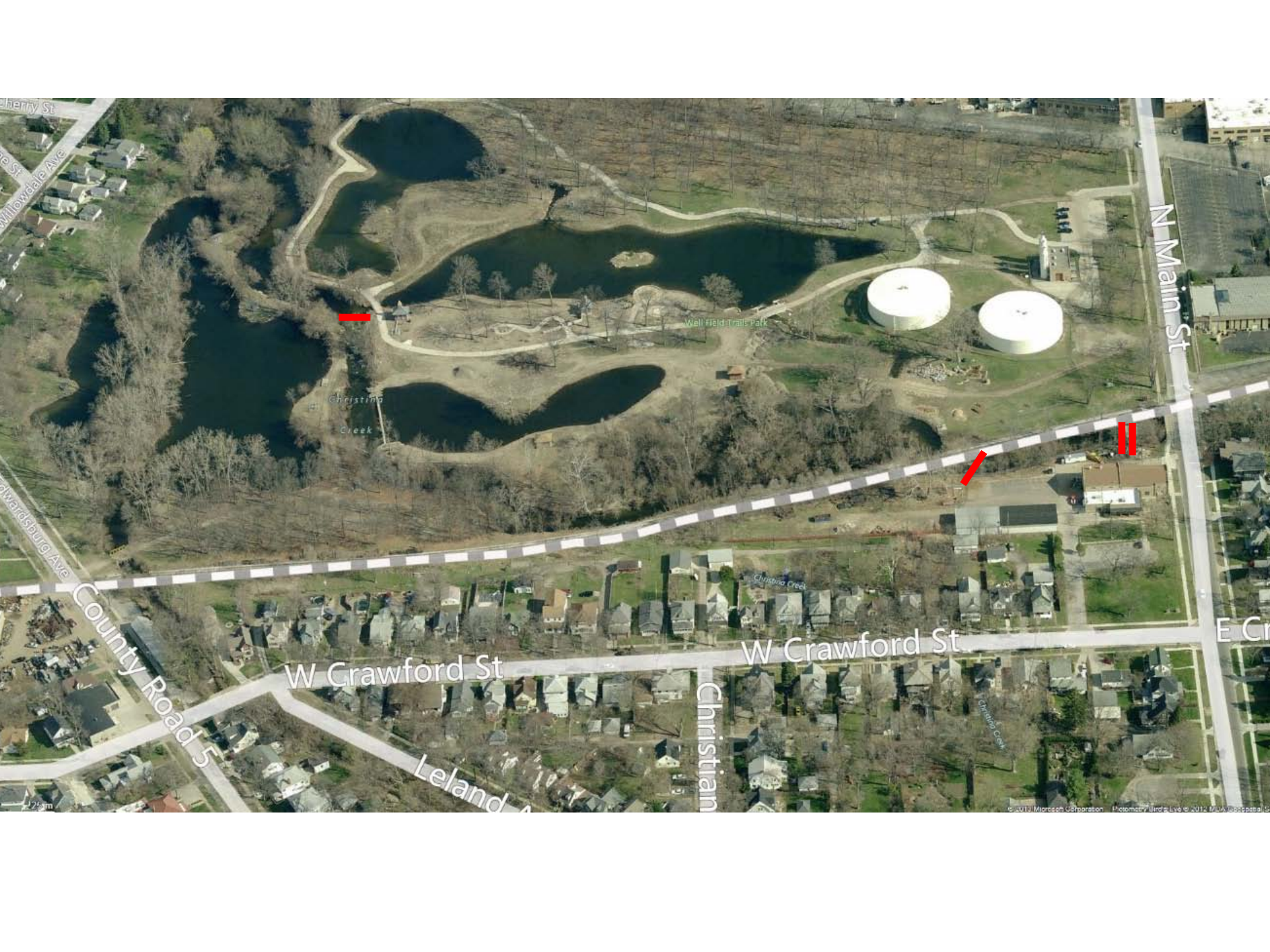
0 25m

© 2013 Microsoft Corporation. Imagery from Bing Maps. © 2013 Microsoft Corporation. All rights reserved.









Cherry St

Willowdale Ave

N Main St

Well Field Trails Park

Christina Creek

Stwardsburg Ave

County Road 5

W Crawford St

W Crawford St

E Cr

Leland

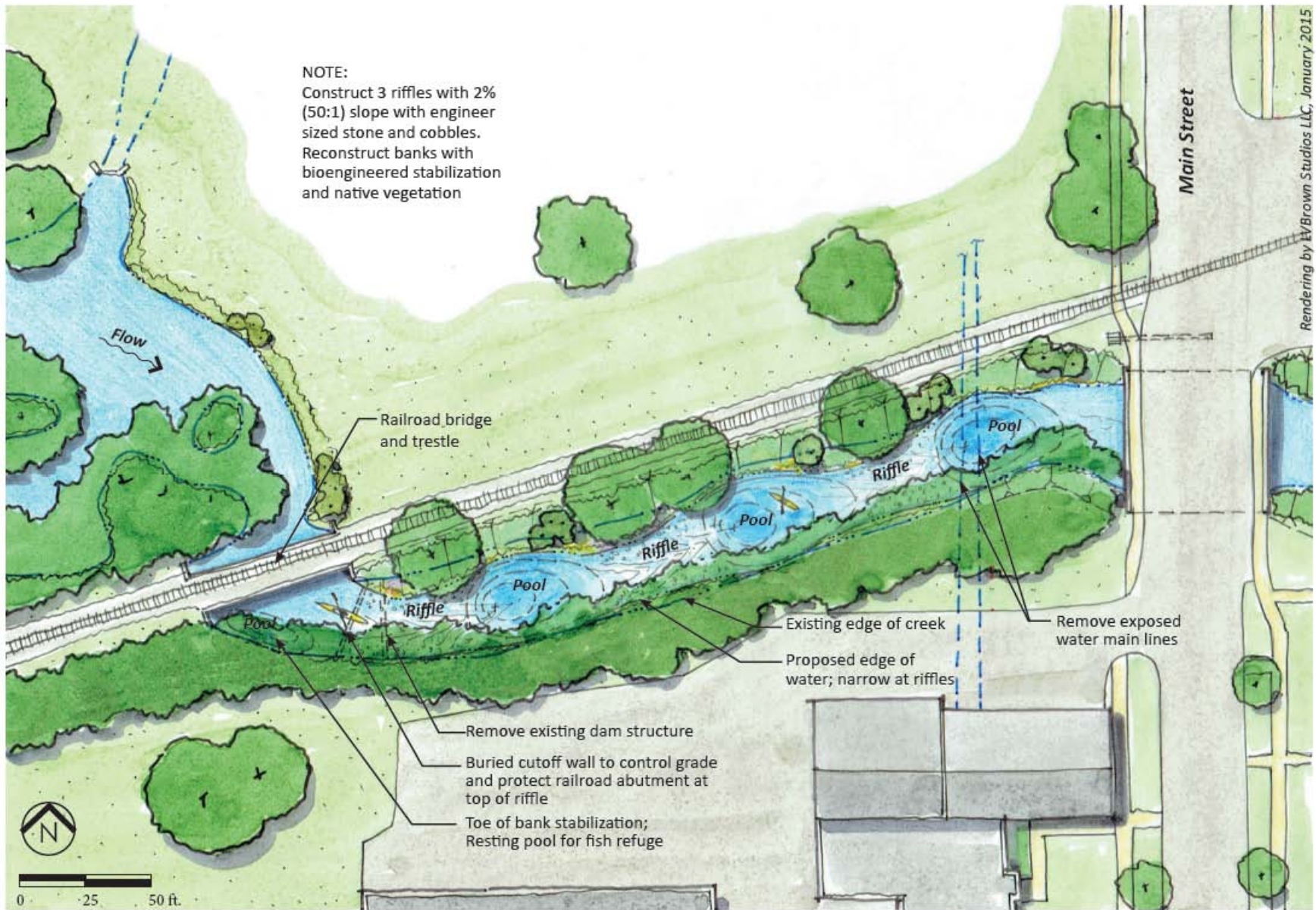
Christian

Christina Creek

25m

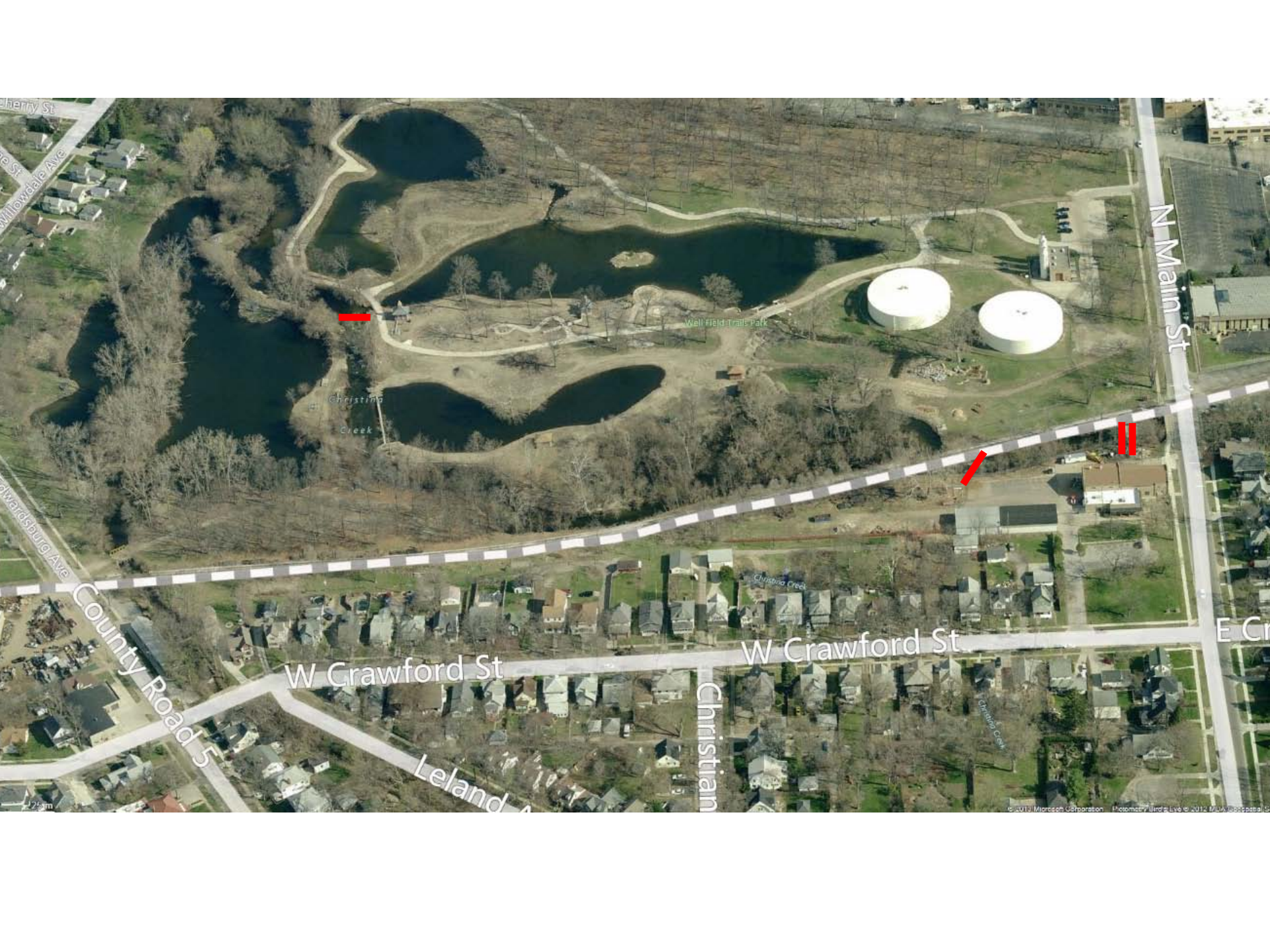
© 2013 Microsoft Corporation. Imagery from Bing Maps. © 2013 Microsoft Corporation. All rights reserved.





Christiana Creek Conceptual Design Site 4: The Chute





Cherry St

Willowdale Ave

Stwardsburg Ave

County Road 5

0 25 50 m

W Crawford St

Leland

Christian

W Crawford St

N Main St

E Cr

Well Field Trails Park

Christina Creek

Christina Creek

Christina Creek

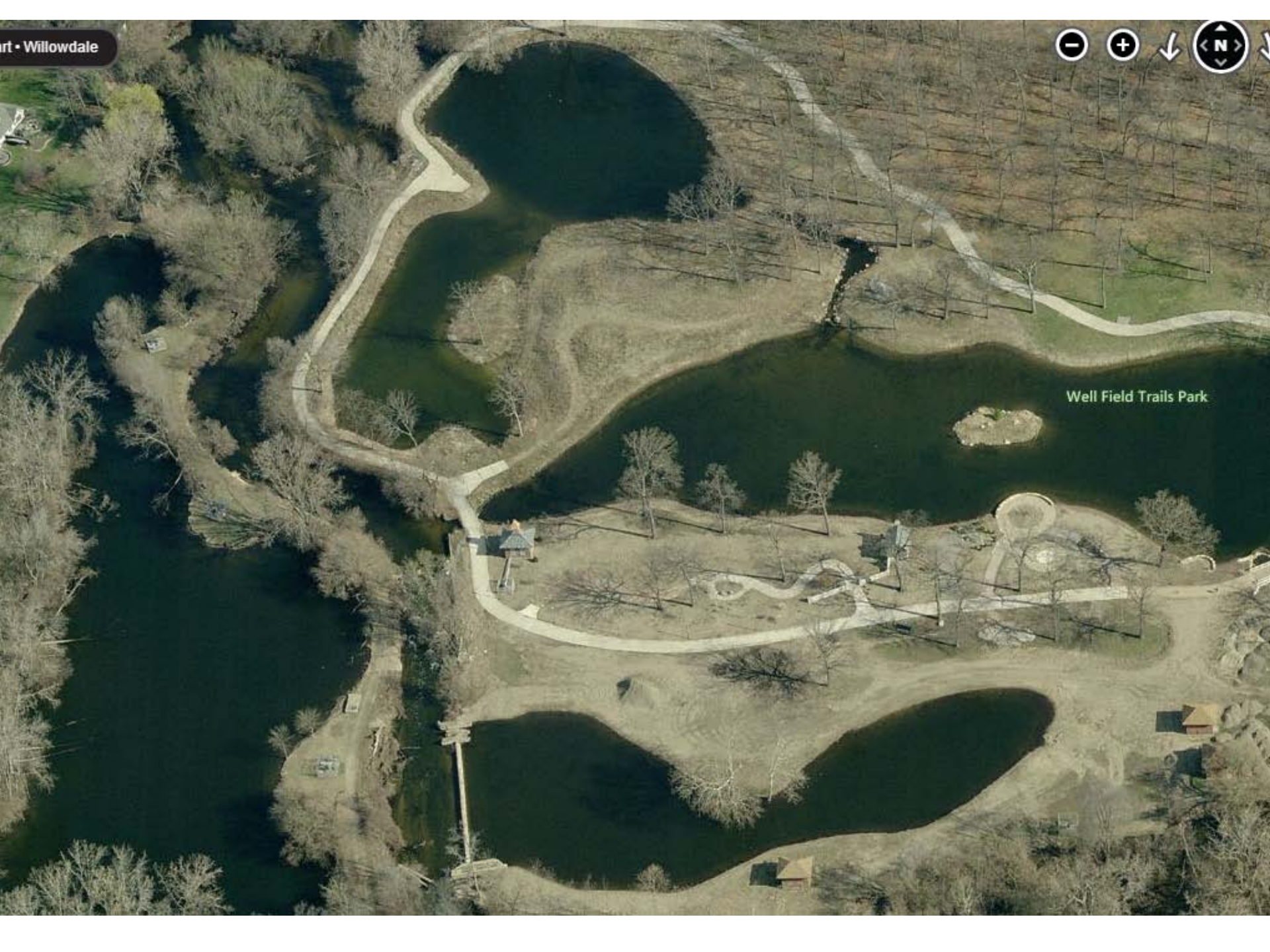
© 2013 Microsoft Corporation. Imagery from Maxar. © 2013 Maxar. All rights reserved.



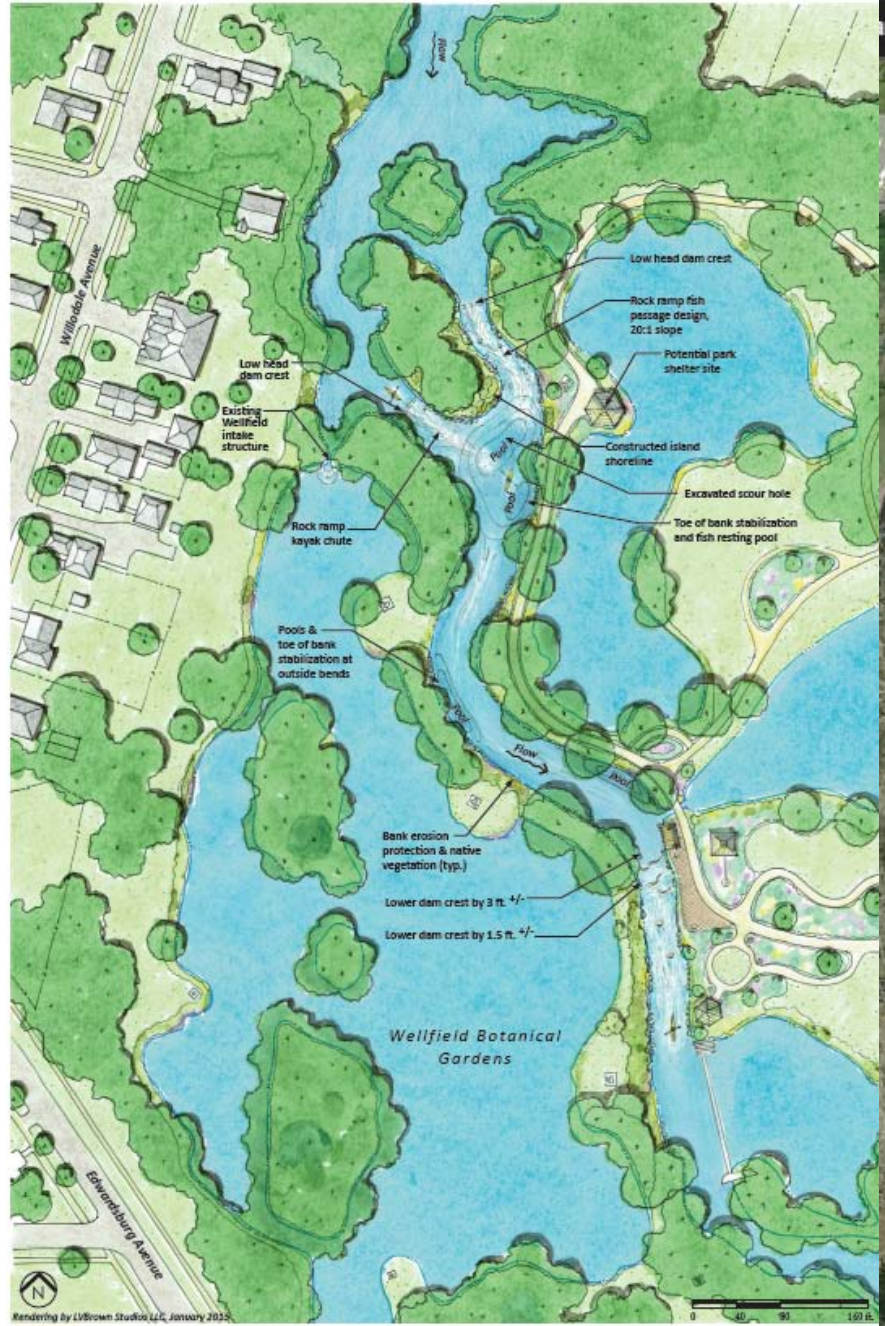
2010/09/17







Well Field Trails Park



Rendering by LVI Brown Studios LLC, January 2015



Christiana Creek Conceptual Design Site 5: The Wellfield Botanic Gardens



Funding For This Project Was Provided By
United States Fish and Wildlife Service, National Fish Passage Program



This Project Was Completed In Partnership And With The Support Of
Many Important Organizations



Christiana Creek Fish Passage

Daragh Deegan

4th Quarter
December 1st, 2015



Next Meeting
March 1st, 2015



SJRBC
St. Joseph River Basin Commission