



























f
KEEP CALM
AND
PICK UP
STICKS

PATRICK O'HERTY 2014
FERNWOODMICAL.ORG

































840

840

UNION PACIFIC

DEPENDABLE
TRANSPORTATION

U.P. 840

UNION
PACIFIC

840



























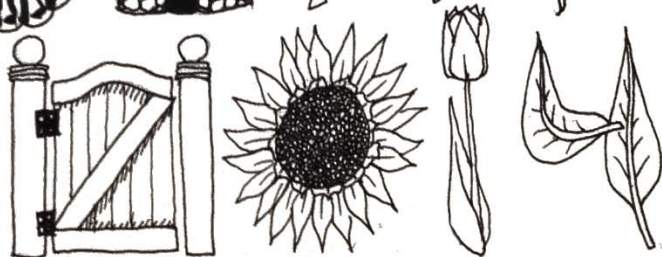


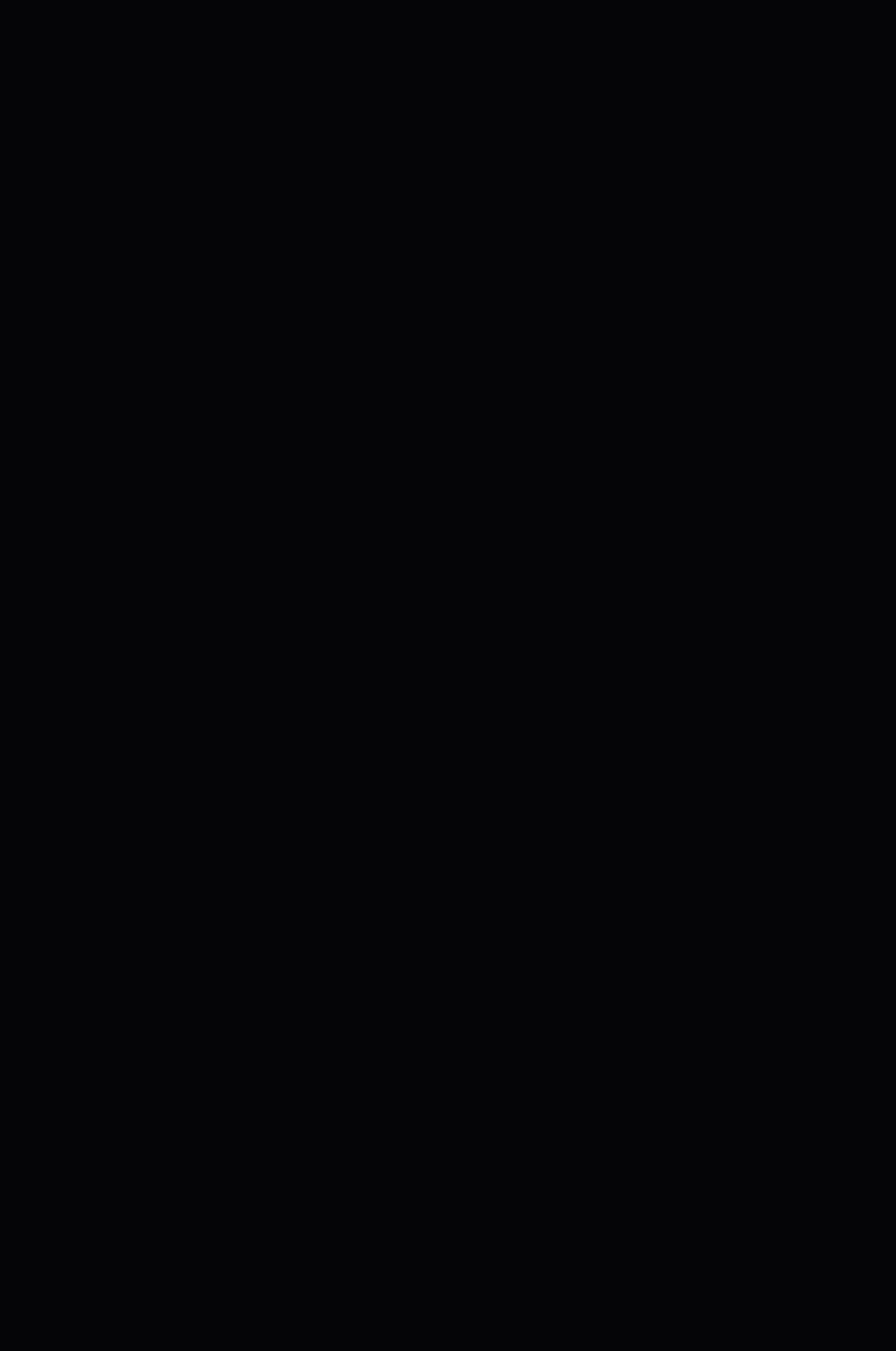






&













FERNWOOD
Michigan Nature Preserve
MICHIGAN















Education Center

- Asian courts: Seating at table for 70-100
- Flagstone garden
- Event Service Access
- Van parking with cart access
- Rain garden

Fiddlehead Fun

- Wet sands for sculpting and water play
- Fun 'Clave' provides themed water zones, climbing and hiding
- Shaded seating area
- Storage for shovels, pails, etc.
- Spout waterfall station
- Stroller parking at entrance

Maintenance Center

- Storage/Equipment Building
- Children's Garden restrooms
- Staff restroom with shower
- Staff / Event Parking - 22 cars

Amphitheater Garden

- Winter Garden
- Scenic View to Education Center
- Wall Seating for 140+
- Grass Seating for 300
- Event / 9/16 lawn

Upper Gardens

- Entry at weeping Katana
- Male path 8' wide
- Showery gate
- Ferny-Wood 'Kil-size' woodland with paths and mist
- Grass running hills
- Interactive water feature

Fernery

- Pails, Bins
- Ferns, Primroses

West Garden Entrance

- Main garden access on west facade
- Egress through french doors
- Room on deck for movable seating
- IC routes via ramp on north facade

Visitor Center South

- Entry path for after-hours access
- Outdoor plant sale terrace
- Service utilities

South Vista Garden

- Prismatic steps and accessible walkway
- Waterfall and rock garden
- Lawn/Event Space
- Ramped creek (50')
- Enlarged pond and island
- Headhouse and greenhouse

Ferry Forest Children's Garden

King of the Hill

- Climb the castle wall
- Grow thru tunnel
- Silt

Parking

- 176 Cars including 8 handicap (1 van)

Froggy Pond

- 'Natural' pond with planting and wildlife?
- Stepping stones for water access - not a wading pond
- Fernwood frogs raised here
- Stump 'beaver dam' for climbing and hiding
- Symbolic connection to Fiddlehead Fun

Rocky Ravine

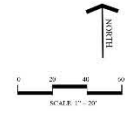
- Log / rock bank for sitting
- Haven ring

Heartwood House

- Movable tables and chairs for events
- 40 - 50 of 80" round tables
- Themed like the Pinnacles
- Primitives to restrooms

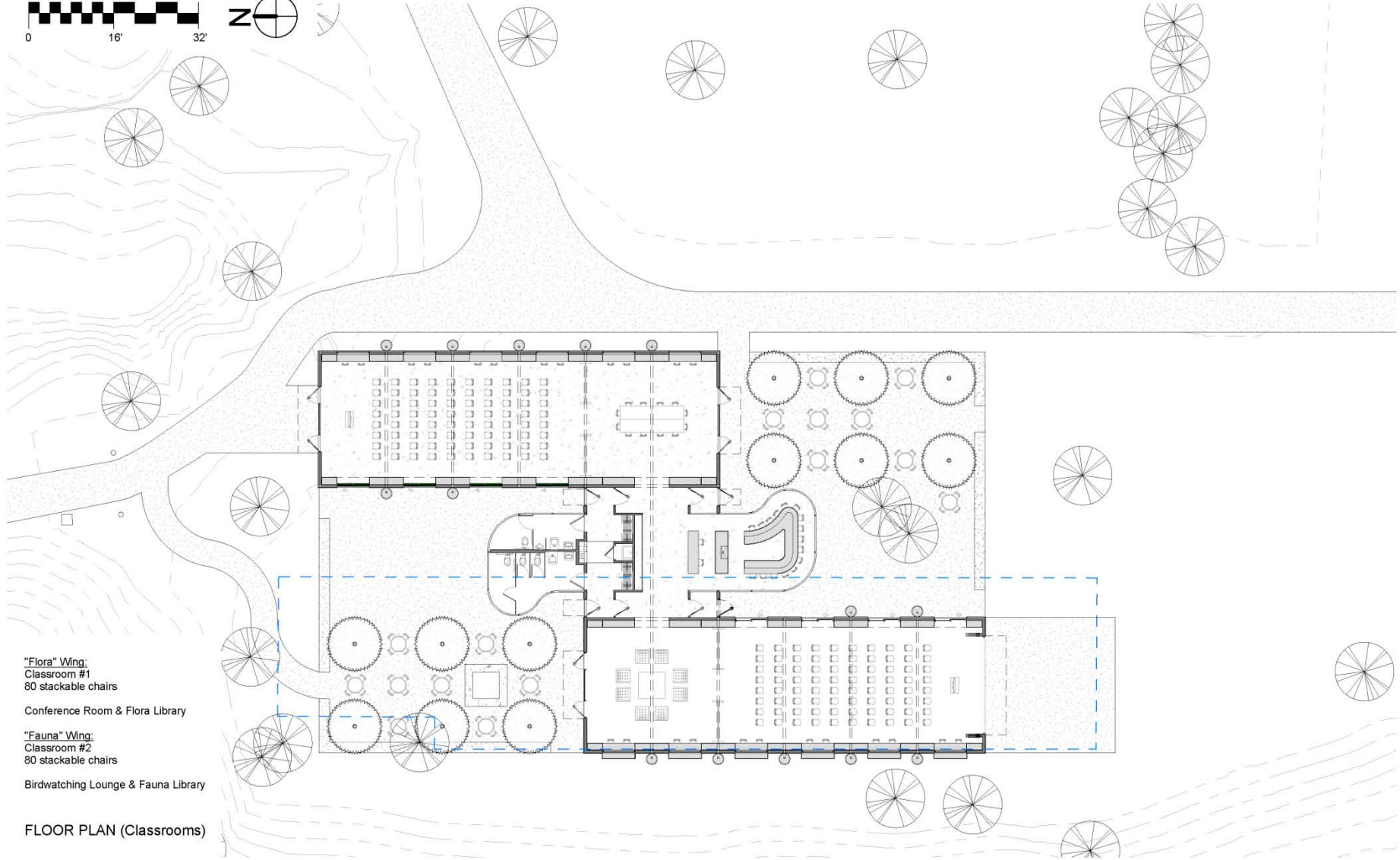
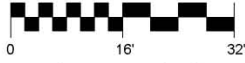
Fox Hollow

- Special area for D - Zs
- Potentially gated
- Shaded seating for caregiver socializing
- Sand and flat rock digging/crawling area
- Animal sculpture for fantasy play
- Tree thorn exhibits - animal 'sins' including fox den and suspended woven nest
- Hollow logs





Graphic Scale: 1 inch = 16 feet



"Flora" Wing:
Classroom #1
80 stackable chairs

Conference Room & Flora Library

"Fauna" Wing:
Classroom #2
80 stackable chairs

Birdwatching Lounge & Fauna Library

FLOOR PLAN (Classrooms)

Rain Garden

Hard Working & Beautiful

The job of a rain garden is to collect and return rainwater into the ground.

Sounds simple and it is.

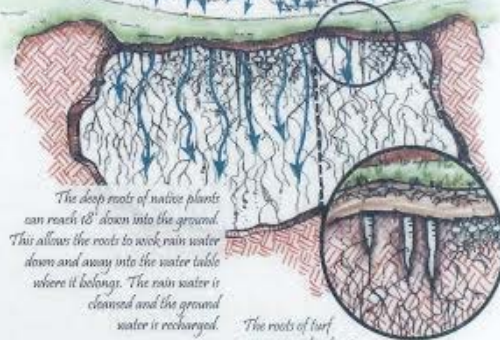
The first step is to direct rainwater to a shallow basin. It's important to stop rainwater from sweeping over the land and instead provide the rainwater an opportunity to infiltrate back into the soil near where it originally falls. This reduces erosion to stream banks, roadways and our yards. Rain gardens keep excess stormwater out of our sewers and basements. Moisture loving deep-rooted native plants are planted in and around the basin. Pollutants picked up by the rainwater as it travels across roofs, parking lots and the land are filtered out by native plants. The deep roots wick the excess rainwater down, away and into the water table.

Site location is important. This rain garden was located here for several reasons:

- Rain water had a tendency to collect here.
- It was relatively simple to direct rainwater from the nearby roof to collect in this area as well.



Rainwater falls on the roof, into the gutter and down the downspout. The rainwater then flows into a perforated pipe that runs under the rain garden where the rainwater is dispersed.



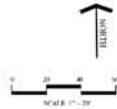
The deep roots of native plants can reach 18' down into the ground. This allows the roots to wick rain water down and away into the water table where it belongs. The rain water is cleaned and the ground water is recharged.

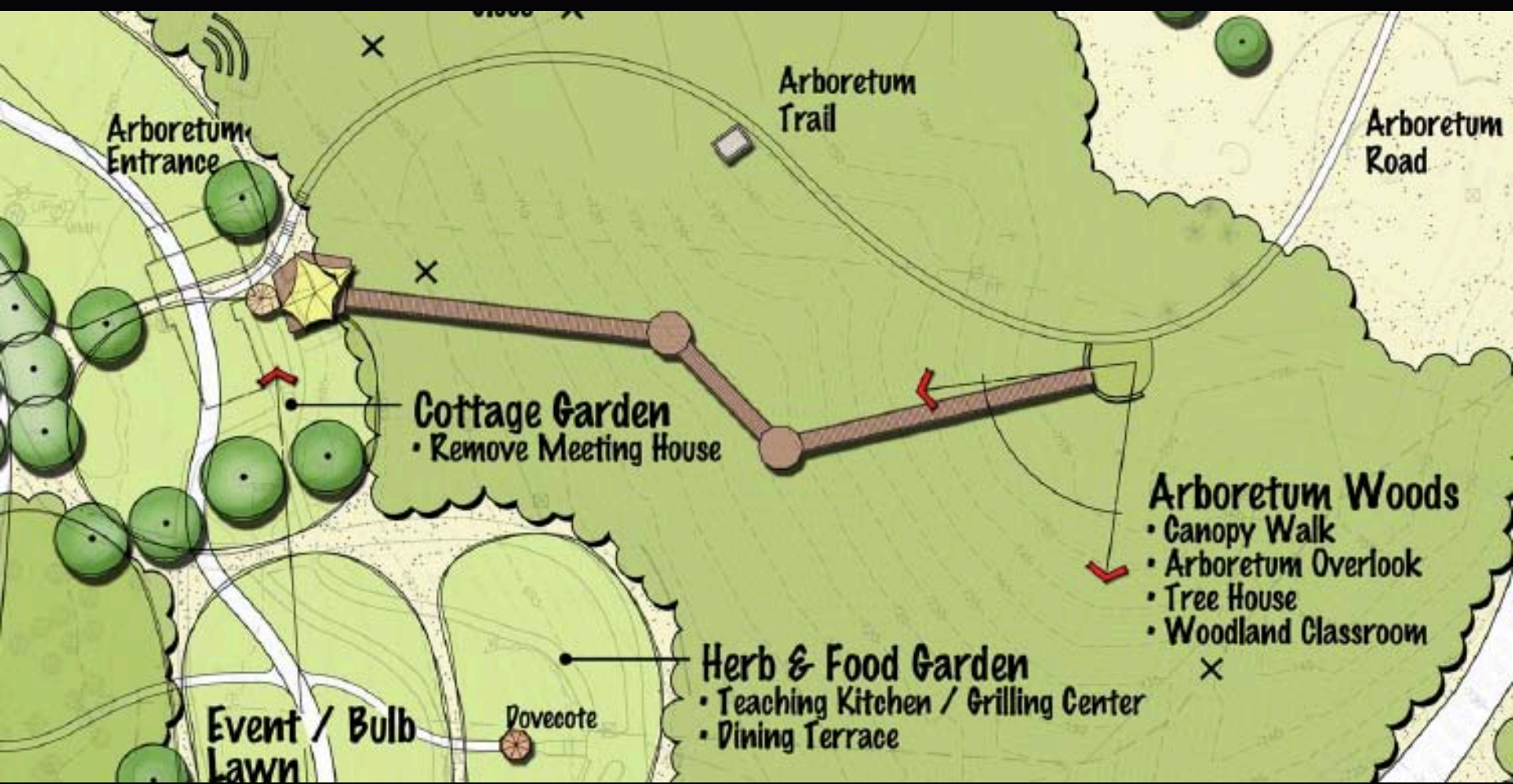
The roots of turf grass are only about 2' deep and therefore not capable of wicking rainwater down and away.

Rain Gardens...

- calm down stormwater,
- recharge water supplies,
- filter potential pollutants,
- cool run off water,
- beautify our surroundings,
- become attractive havens for birds, butterflies and wildlife.







Arboretum Entrance

Arboretum Trail

Arboretum Road

Cottage Garden
• Remove Meeting House

Arboretum Woods
• Canopy Walk
• Arboretum Overlook
• Tree House
• Woodland Classroom

Herb & Food Garden
• Teaching Kitchen / Grilling Center
• Dining Terrace

Event / Bulb Lawn

Dovecote



















































**Johanna's Fernwood
Birthday Menu**
Sunday, August 19, 2012

Your Choice:

Cranberry Chicken Salad
Tender chunks of chicken breast
tossed with dried cranberries and golden
raisins in a fresh basil aioli, served on
baby greens and topped with cashews

Salmon Salad Asparagus Wrap
Asparagus tossed with garlic, onion, and
a bit of salmon, topped with fresh greens
in a fresh wrap

















