

The logo features a stylized river winding from the left towards the right. The river is depicted with a white center and blue outer banks. The background on the left is green, representing land, and on the right is blue, representing water. The text 'St. Joseph River Basin Commission' is written in white on the blue background.

# St. Joseph River Basin Commission

18<sup>th</sup> Annual Indiana-Michigan  
St. Joseph River Basin Symposium





# St. Joseph River Basin Commission

## Working Together For Clean Water & *Stable Flow*



## Commissioners discuss flooding, legislation

BY MATT GETTS  
mgetts@kpcmedia.com

ALBION — Getting a handle on flooding means not just considering the flow of water leaving an area, but also the flow of water coming in.

To get a broader view of the big picture that led to flooding last summer in the West Lakes chain in Noble County, the Noble County Commissioners said they have favored

legislation that would broaden the powers of the St. Joseph River Basin Commission.

In 1988, according to the commission's website, the Indiana General Assembly approved the creation of the St. Joseph River Basin Commission, with a stated focus of concentrating on water quality issues.

Legislation authored by state Rep. Dave Ober, R-Albion, would broaden the group's focus from water quality issues to include flood mitigation.

The basin encompasses all of Elkhart and LaGrange counties, portions of Noble, DeKalb, Kosciusko and St. Joseph counties in Indiana, as well as parts of eight counties in Michigan.

After last summer's flooding, much of the work of local groups has focused on removing downstream obstacles from the West Lakes chain, which consists of Jones, Waldron, Steinbarger and Tamarack lakes in north central Noble County.

If water moves more



IMAGE CONTRIBUTED

This image from the St. Joseph River Basin Commission website shows the watershed area it contains.

freely from that area, it is less likely to flood. But that's only one piece of the flooding puzzle.

"We need to look upstream," Commissioner Dave Abbott said during Monday's meeting.

Putting together a flood

mitigation plan for the entire St. Joseph River Basin could be important to solving the problems in Noble County.

However, because the basin was formed based on water quality issues, it lacks the power and

authority to even come up with a comprehensive flood mitigation plan.

Ober's legislation would change that, giving the St. Joseph River Basin Commission the same powers of the Maumee

SEE FLOODING, PAGE A8

### Email Newsletters

Get KPC headlines in your inbox 7 days a week <http://kpcnews.com/site/forms/emails/>

### Info

#### The News Sun

P.O. Box 39, 102 N. Main St.

Kendallville, IN 46755

Telephone: (260) 347-0400

Fax: (260) 347-7281

Classifieds: (toll free) (877) 791-7877

Circulation: (260) 347-0400







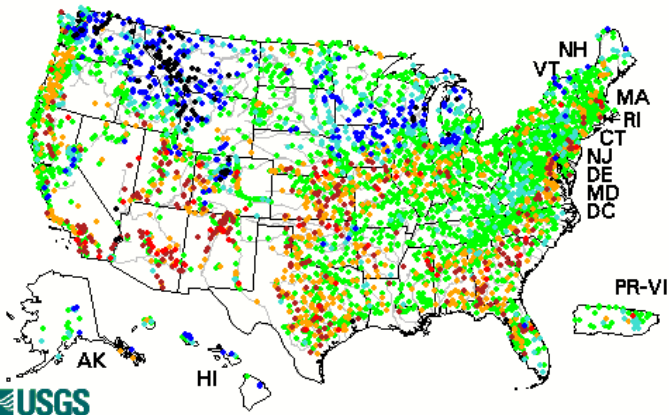






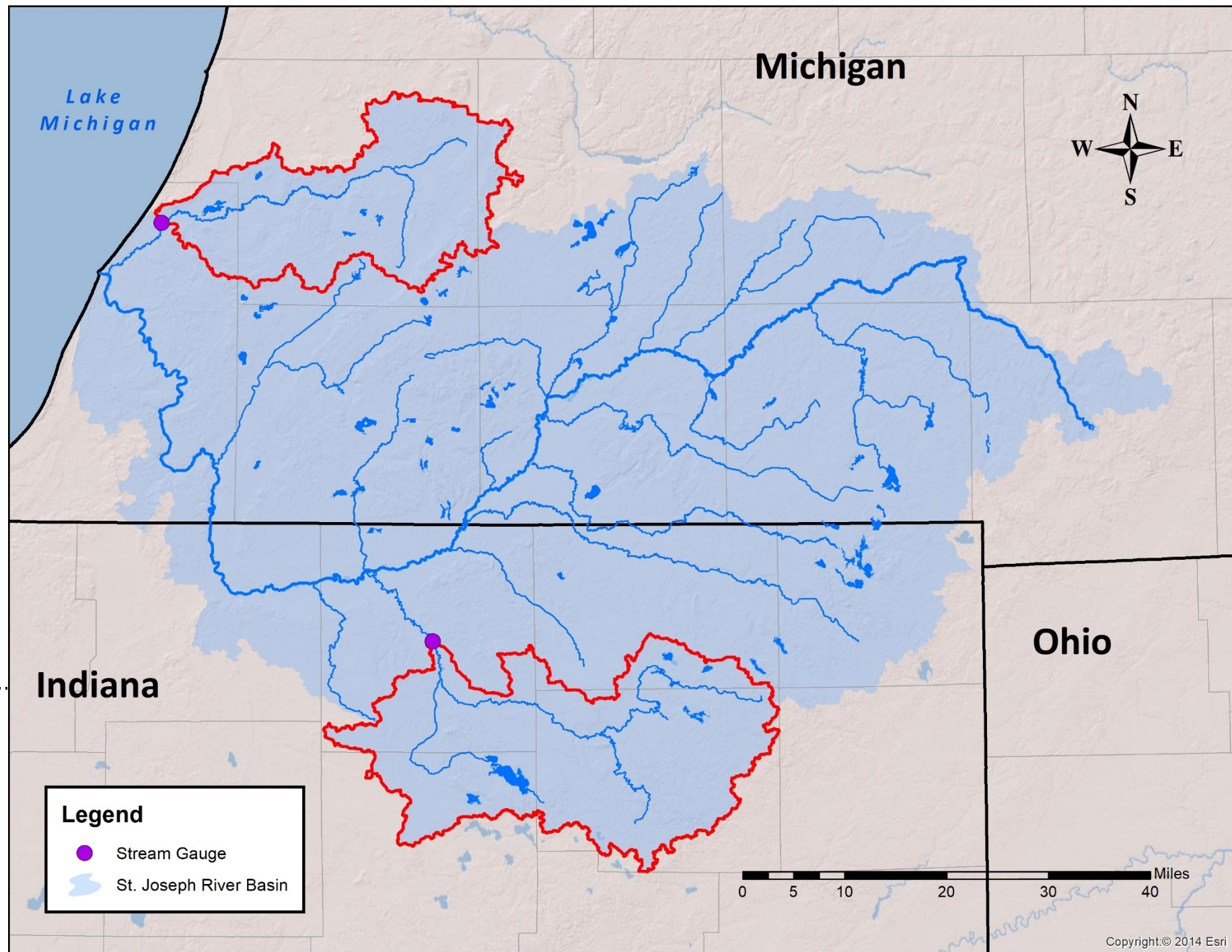
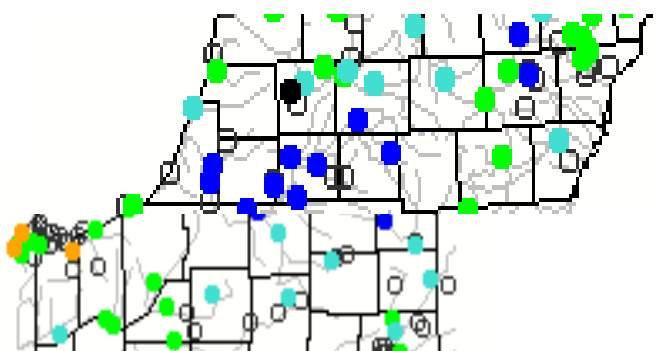


Friday, May 11, 2018 03:30ET



### Explanation

- High
- > 90th percentile
- 76th - 90th percentile
- 25th - 75th percentile
- 10th - 24th percentile
- < 10th percentile
- Low
- Not ranked



**Legend**

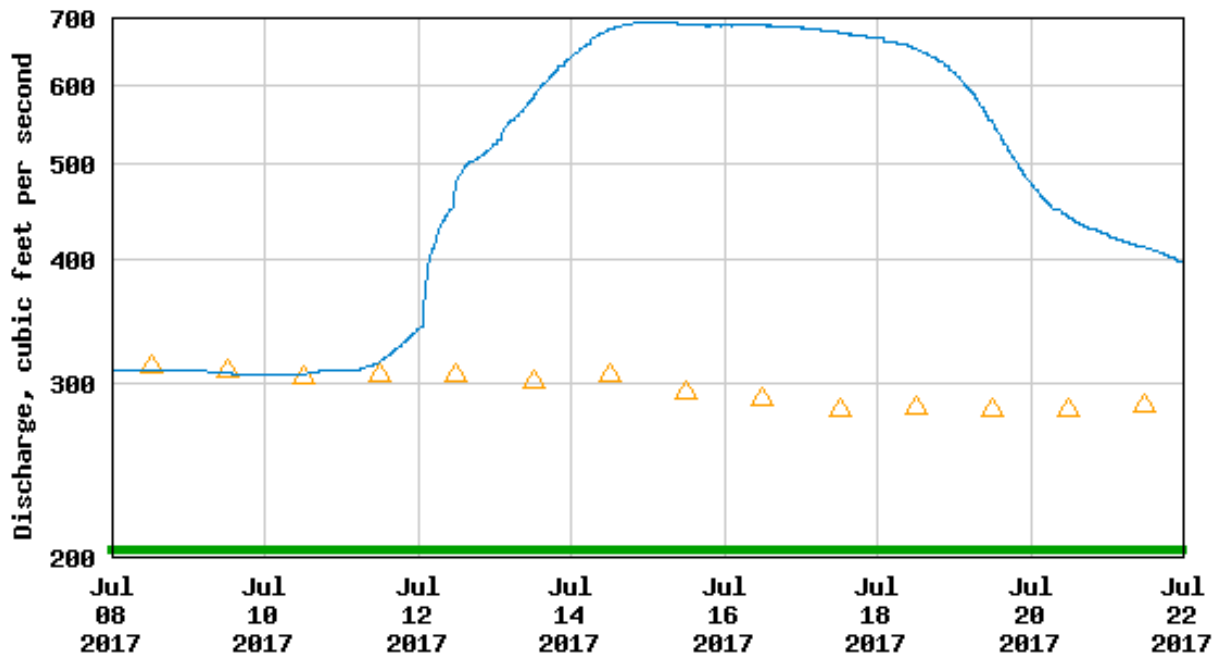
- Stream Gauge
- St. Joseph River Basin



# A tale of two watersheds...



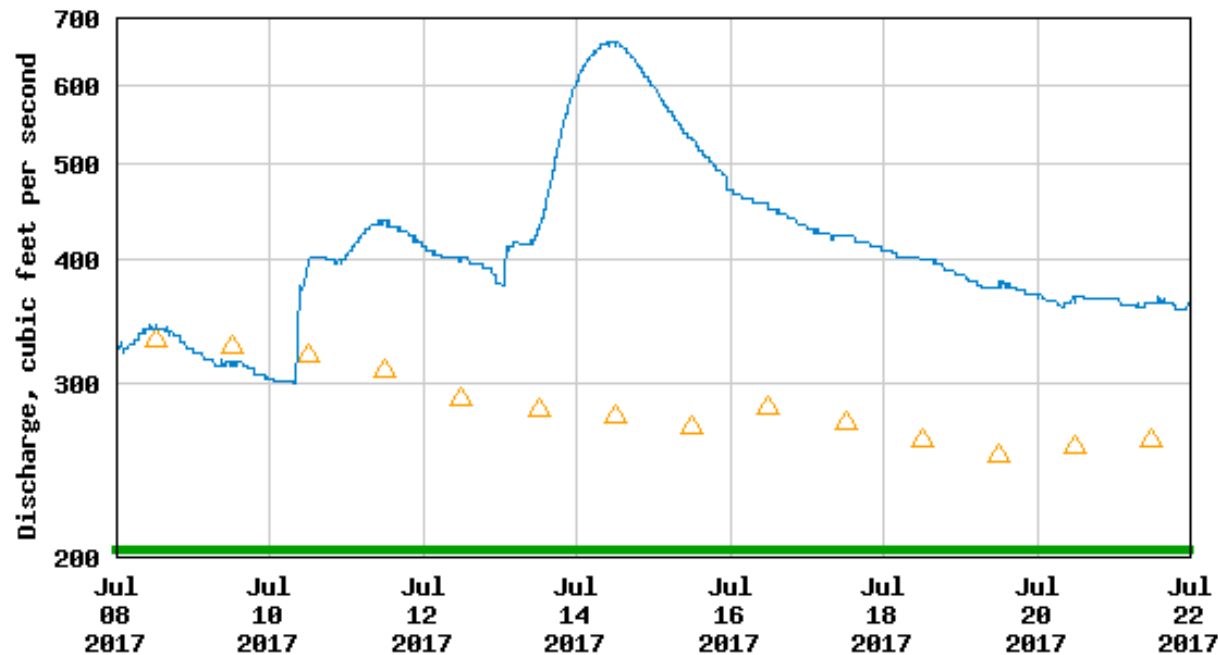
### USGS 04102500 PAW PAW RIVER AT RIVERSIDE, MI



△ Median daily statistic (66 years)    — Discharge  
— Period of approved data



### USGS 04100500 ELKHART RIVER AT GOSHEN, IN



△ Median daily statistic (86 years)    — Discharge  
— Period of approved data

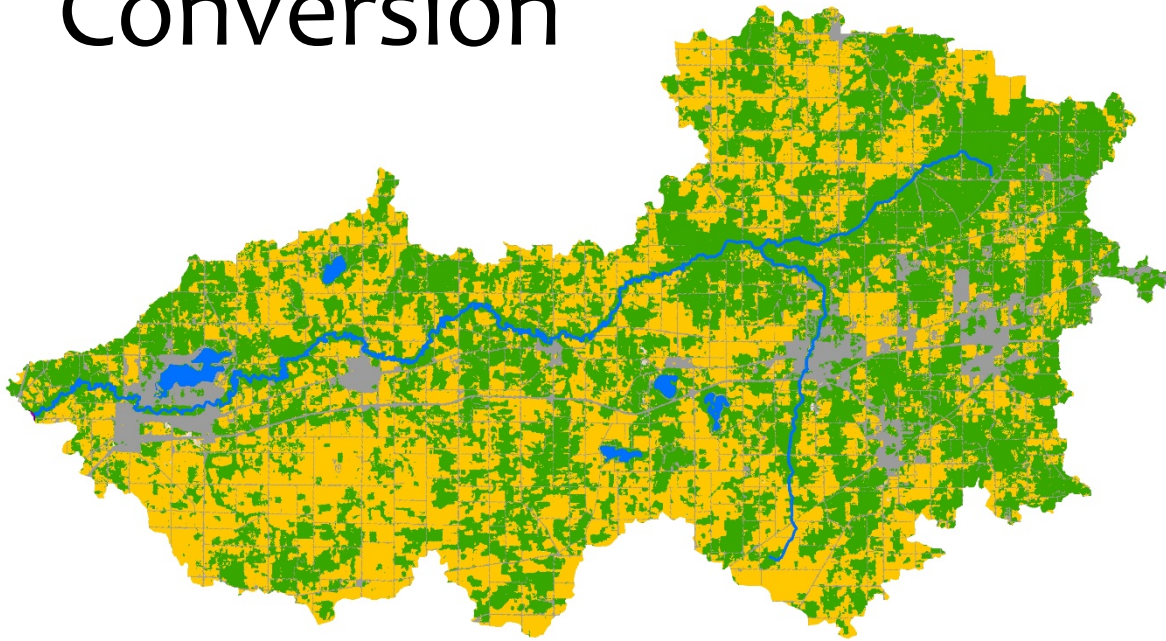




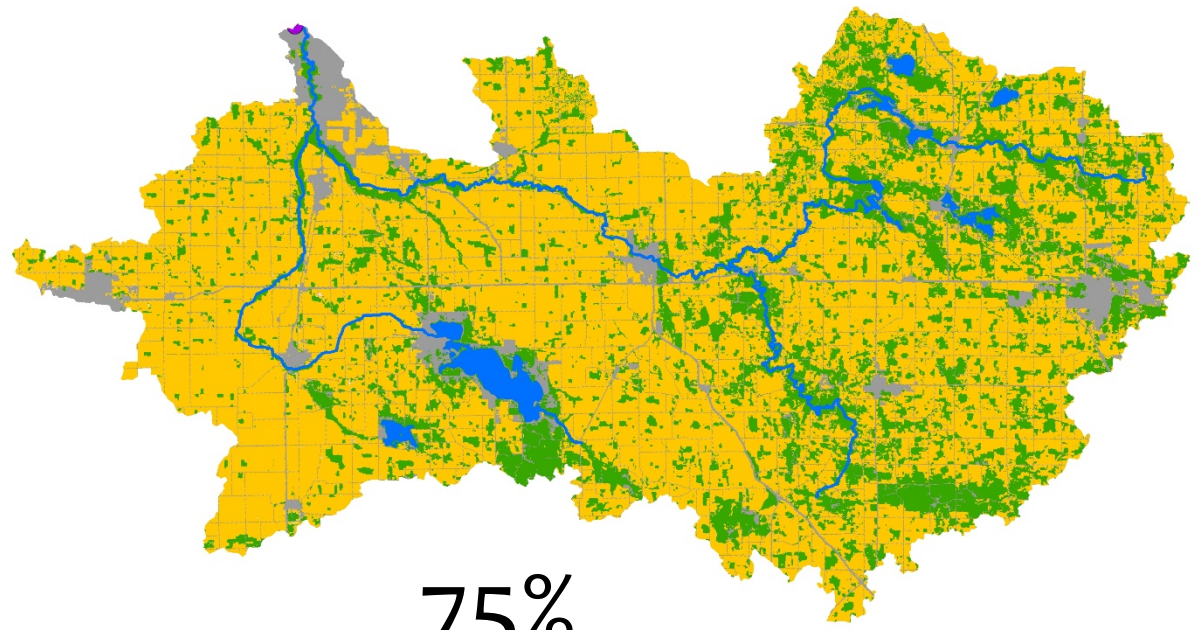


# A tale of two watersheds...

52%  
Conversion



75%  
Conversion



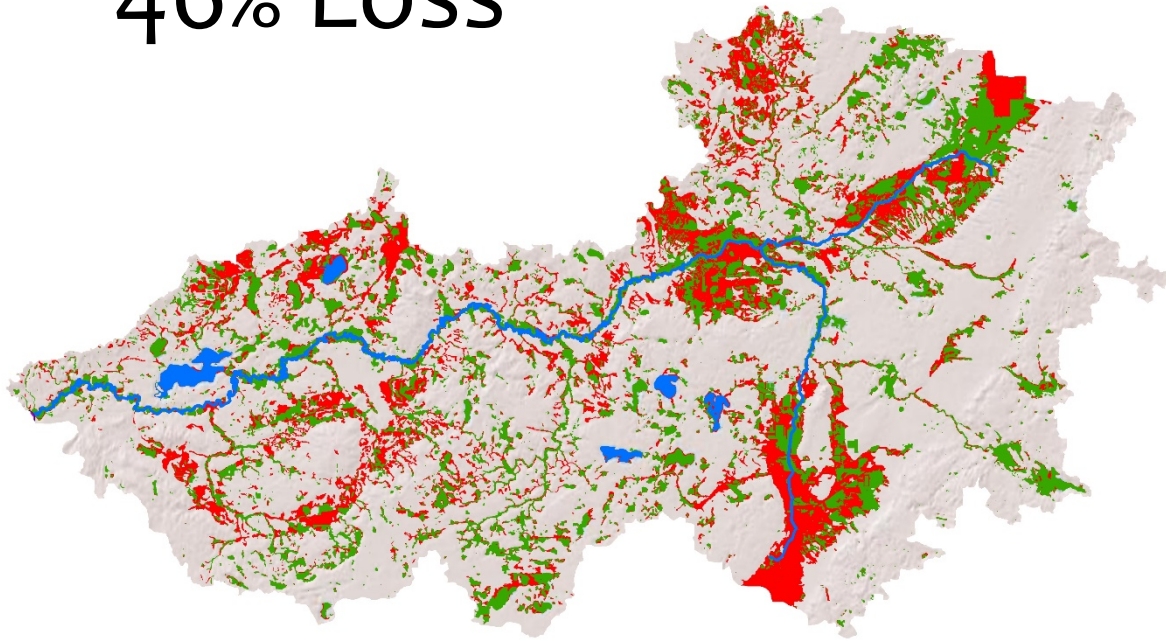




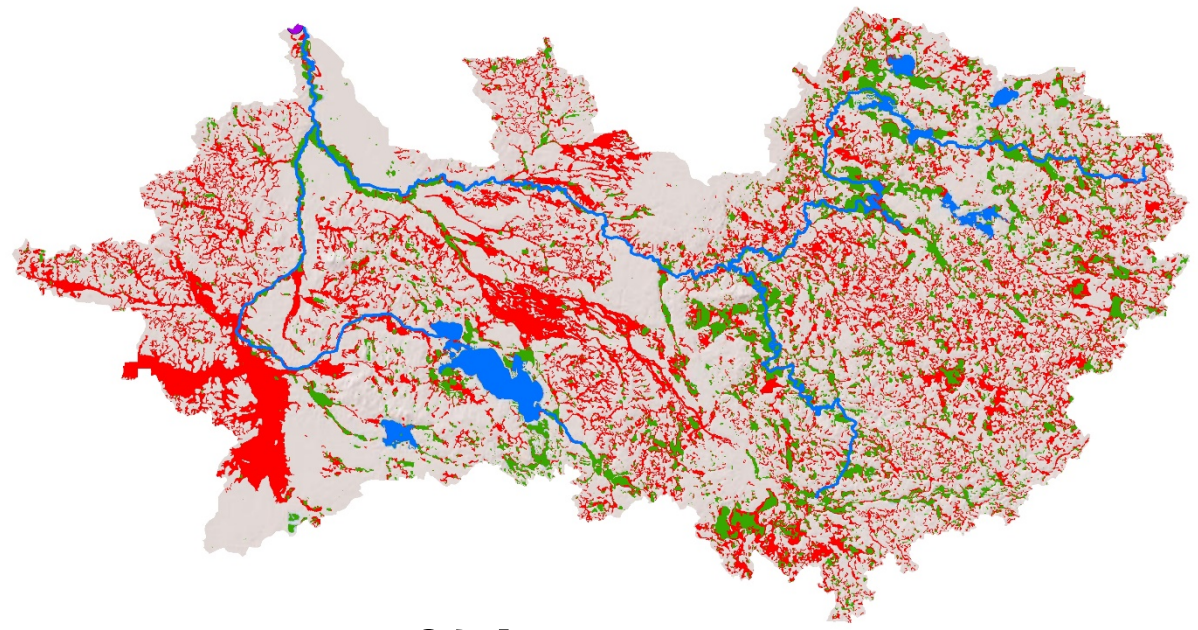


# A tale of two watersheds...

46% Loss



70% Loss









regulations

regulations  
standards

standards  
rules  
strategy

rules  
strategy

rules  
strategy

# COMPLIANCE

practices

policy

security

governance

law



















**PAVE  
DRAIN**  
STORMWATER'S ARCH ENEMY

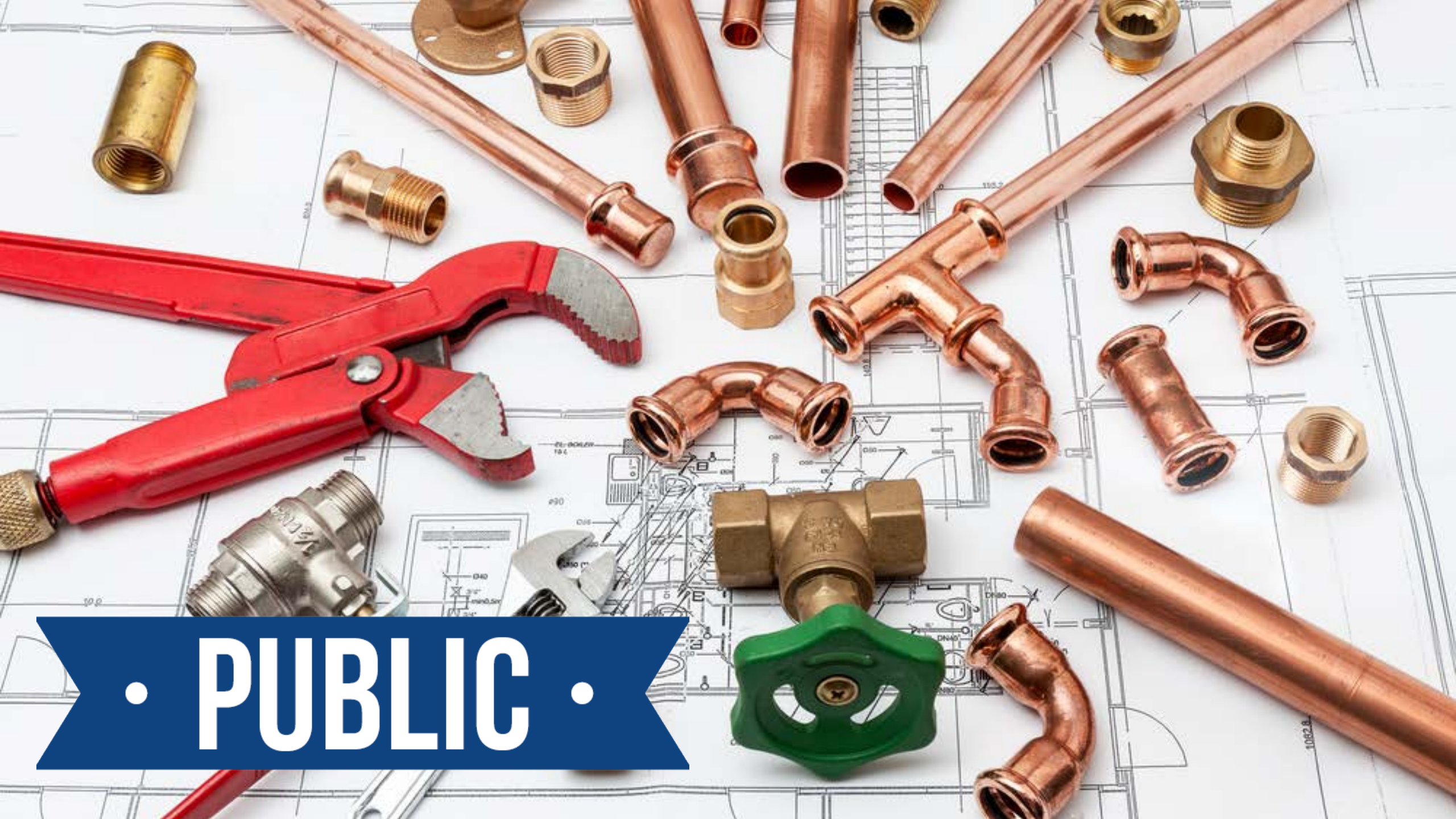






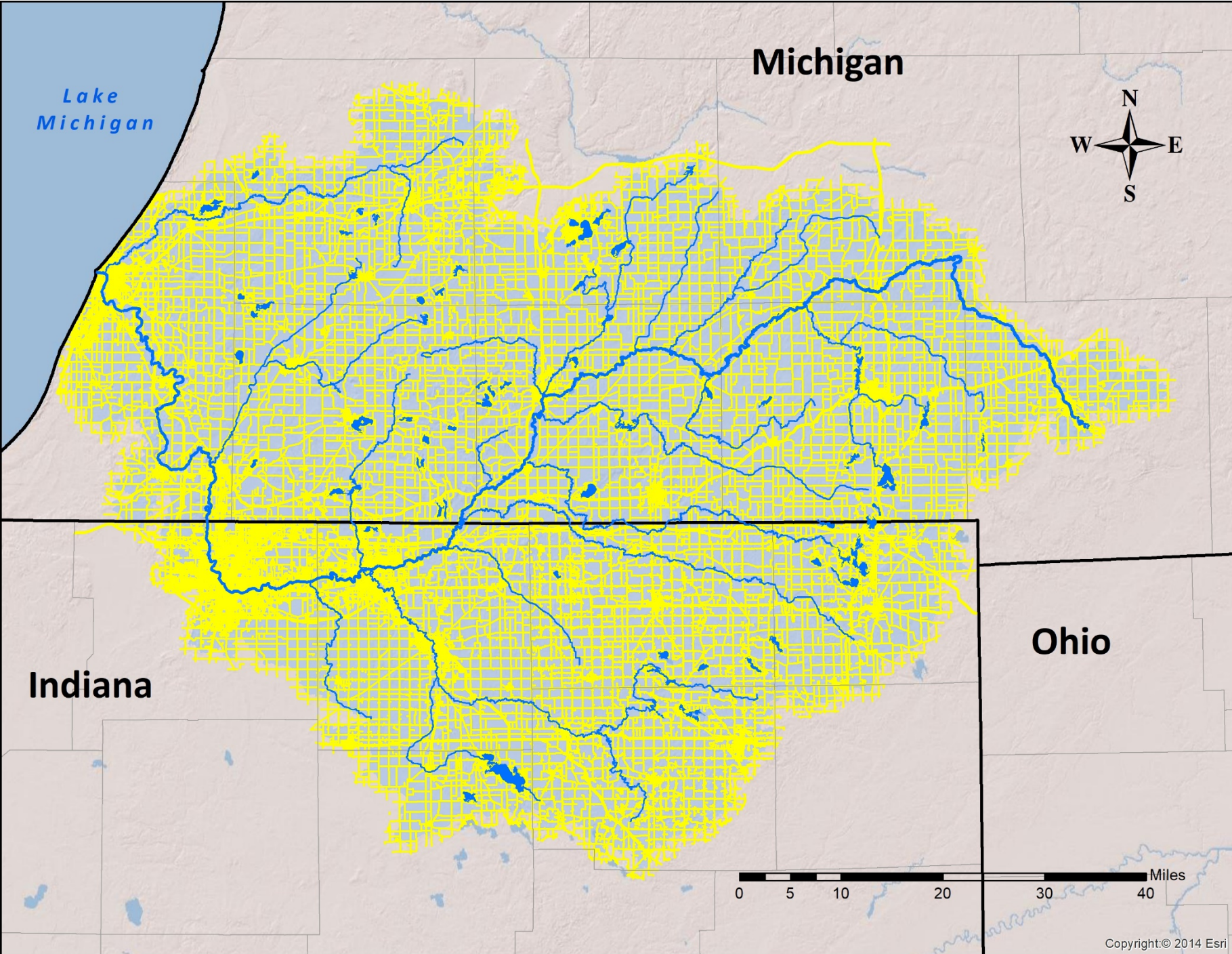






• PUBLIC •





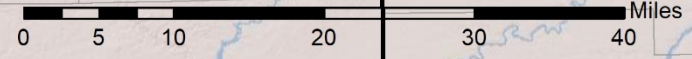
Lake Michigan

Michigan



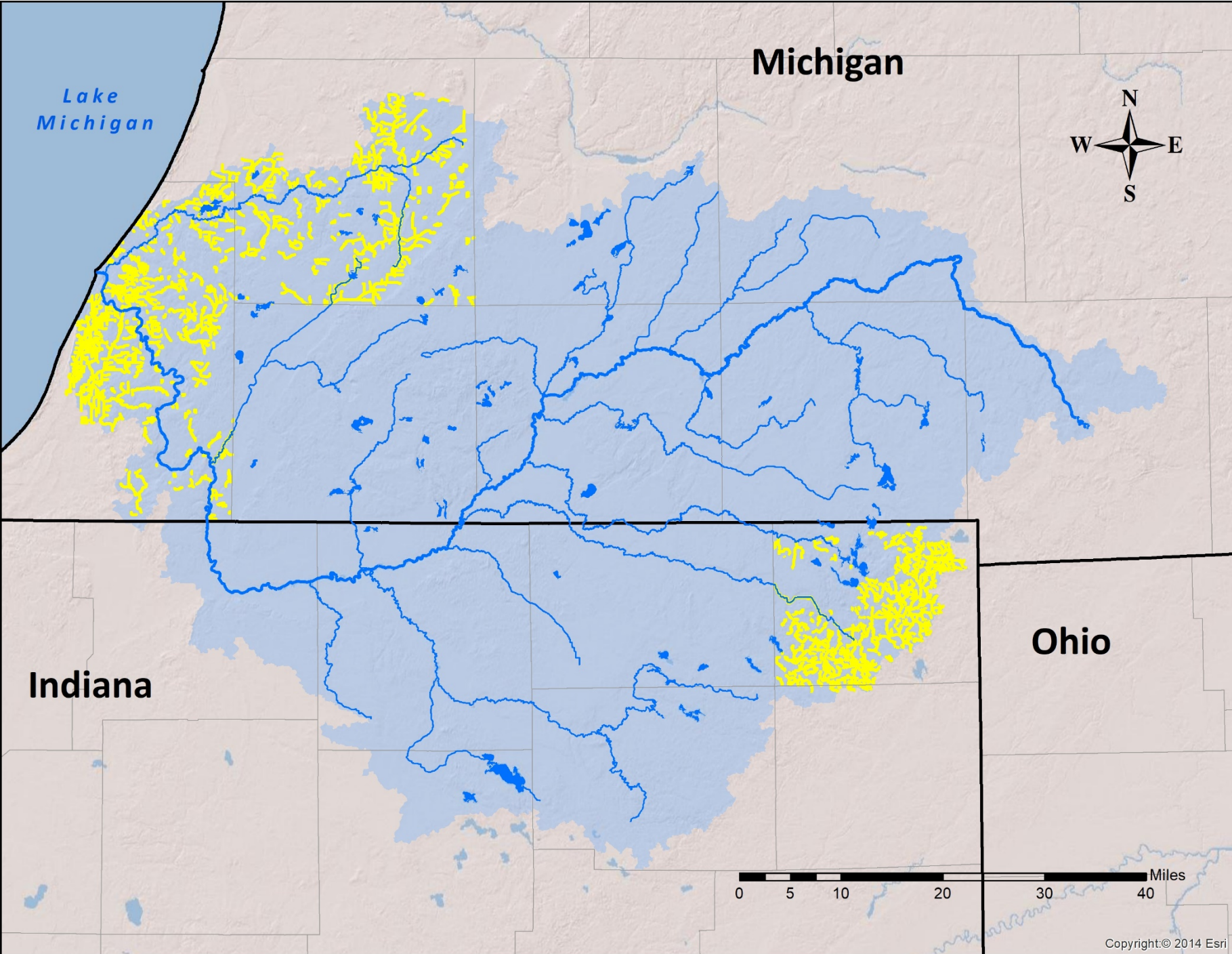
Indiana

Ohio



Copyright © 2014 Esri





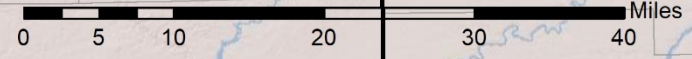
Lake Michigan

Michigan



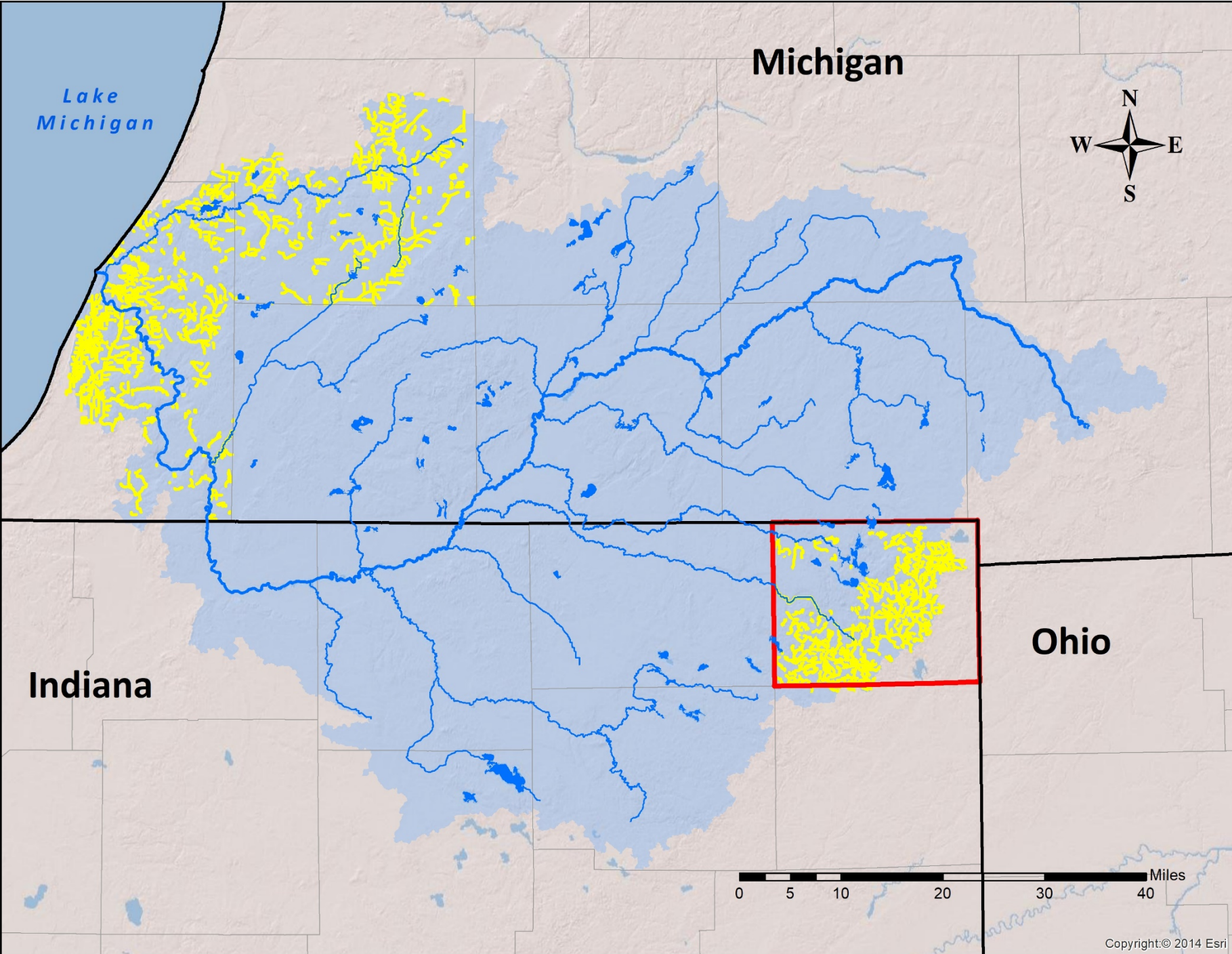
Indiana

Ohio

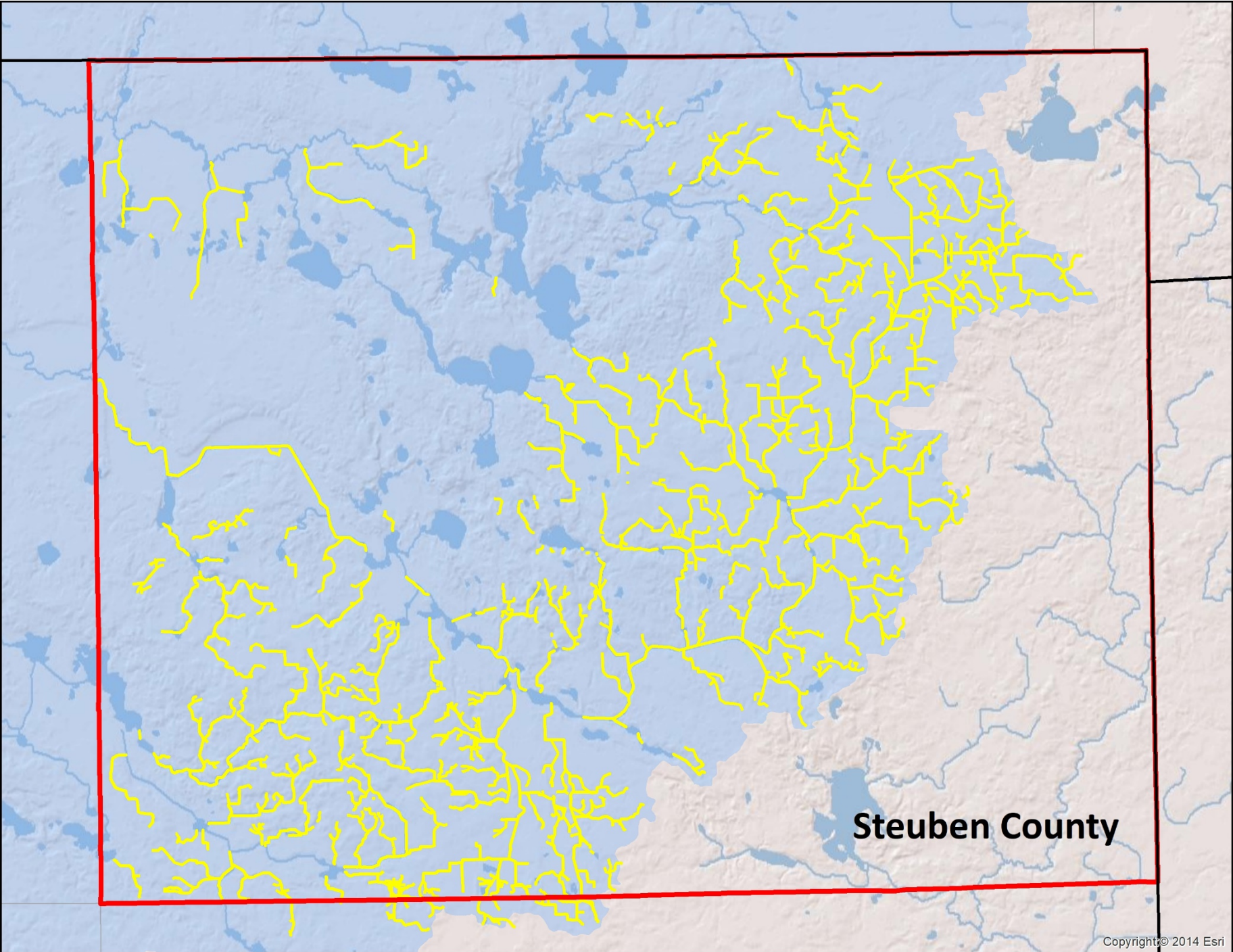


Copyright © 2014 Esri



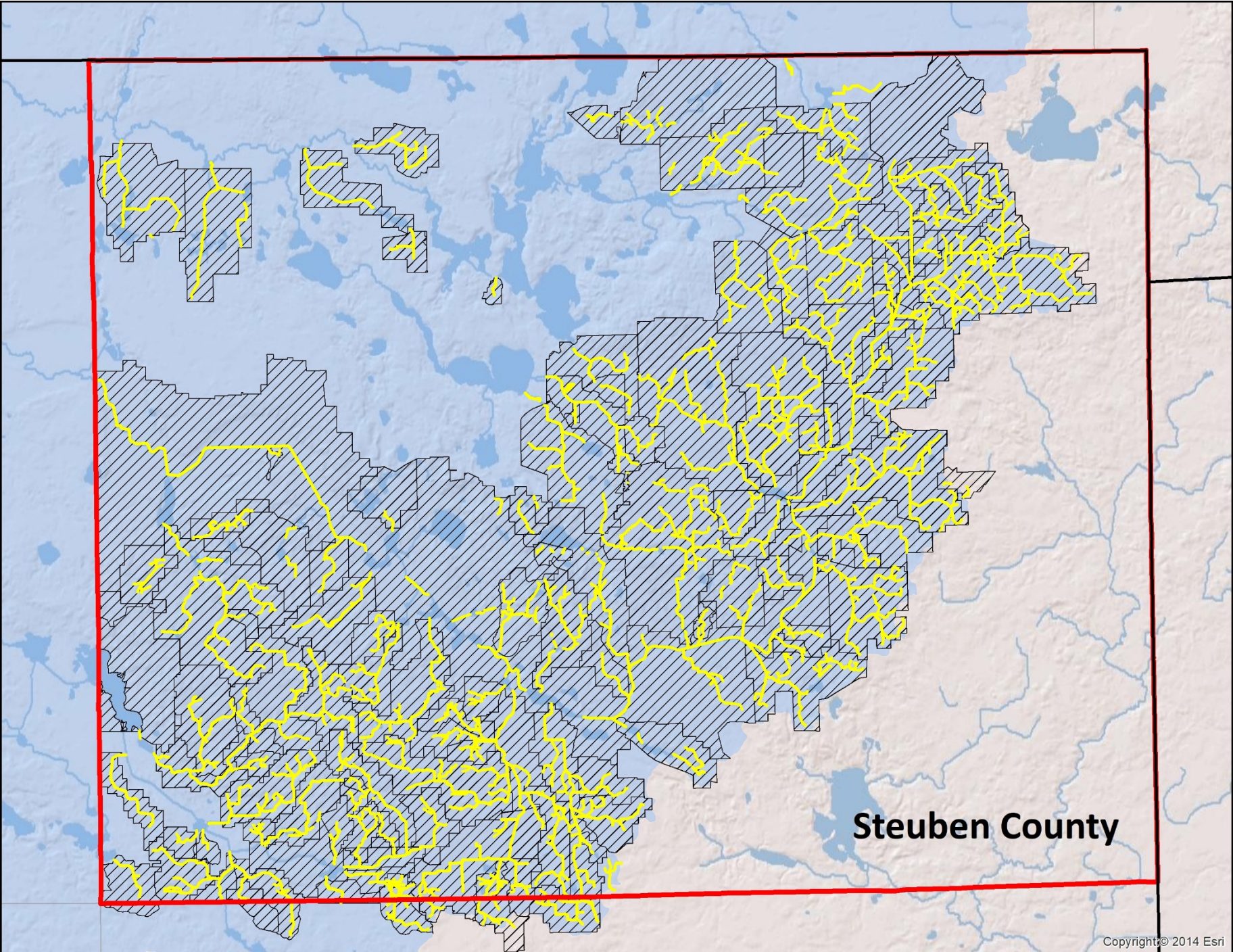






**Steuben County**





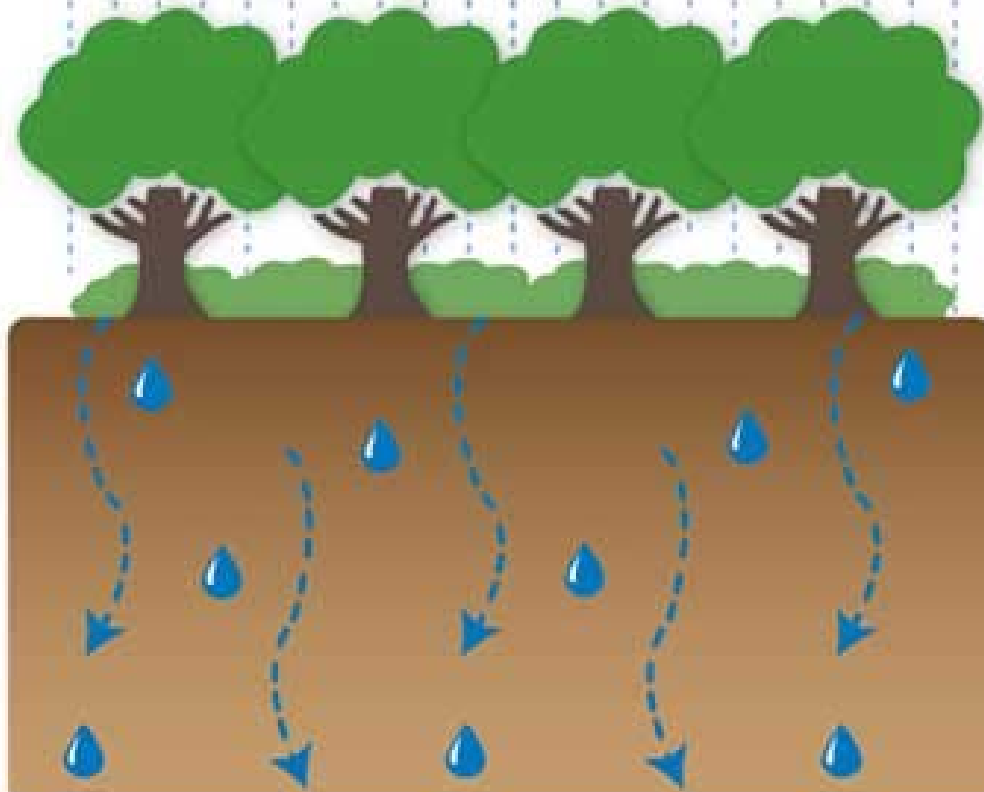
**Steuben County**







The landscape can be a  
**GREEN FILTER**



filtering pollution as the rainwater slowly sinks into the ground.

or a  
**GRAY FUNNEL**



allowing pollution and toxins to be washed into our waterways.