

1st Quarter
March 3, 2015



Financials

- Cash Balances as of December 31, 2014
 - \$153,062.31
- YTD Expenditures
 - \$18,306.34
- 2nd Quarter Expenditures
 - \$4,023.88
- Approval of Claims

Old Business

- **Basin Updates**
 - **Senate Bill No. 216**

Old Business

- Basin Updates
- New SJRBC Website
 - www.sjrbc.com



SJRBC
St. Joseph River Basin Commission

HOME ABOUT BOARD SYMPOSIUM RESOURCES NEWS CONTACT

Welcome to the St. Joseph River Basin Commission

The St. Joseph River Basin Commission (SJRBC) is an Indiana state agency dedicated to improving water quality within the St. Joseph River Basin. The agency is composed of representatives from 7 counties in the Indiana portion of the basin: DeKalb, Elkhart, Kosciusko, LaGrange, Noble, St. Joseph, and Steuben counties.

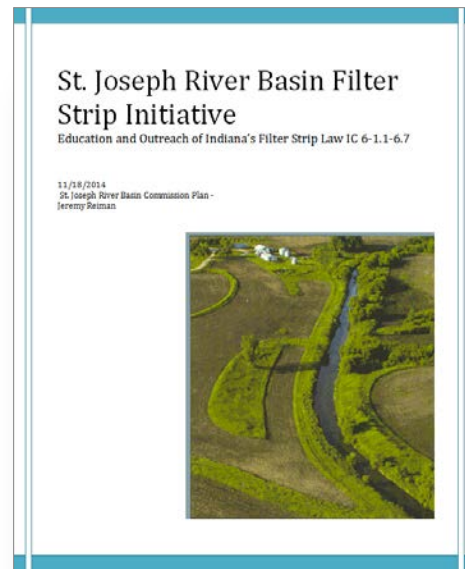
Since 1988, the purpose of the Commission has been:

- Provide a forum for discussion, study, and evaluation of water resource issues of the common concern in the Basin



Old Business

- Basin Updates
- New SJRBC Website
- **St. Joseph River Basin Filter Strip Initiative**

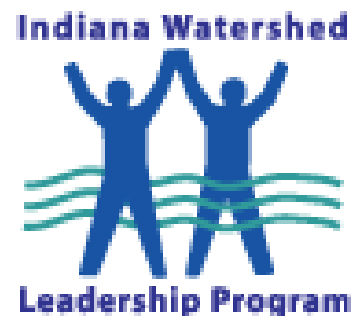


Old Business

- Basin Updates
- New SJRBC Website
- St. Joseph River Basin Filter Strip Initiative
- **Regional Conservation Partnership Program**
 - **\$13.6 million St. Joseph River Watershed Conservation Partnership**
 - Michigan Department of Agriculture and Rural Development
 - Bi-state initiative

Old Business

- Basin Updates
- New SJRBC Website
- St. Joseph River Basin Filter Strip Initiative
- Regional Conservation Partnership Program
- **2016 IWLA Sponsorship**



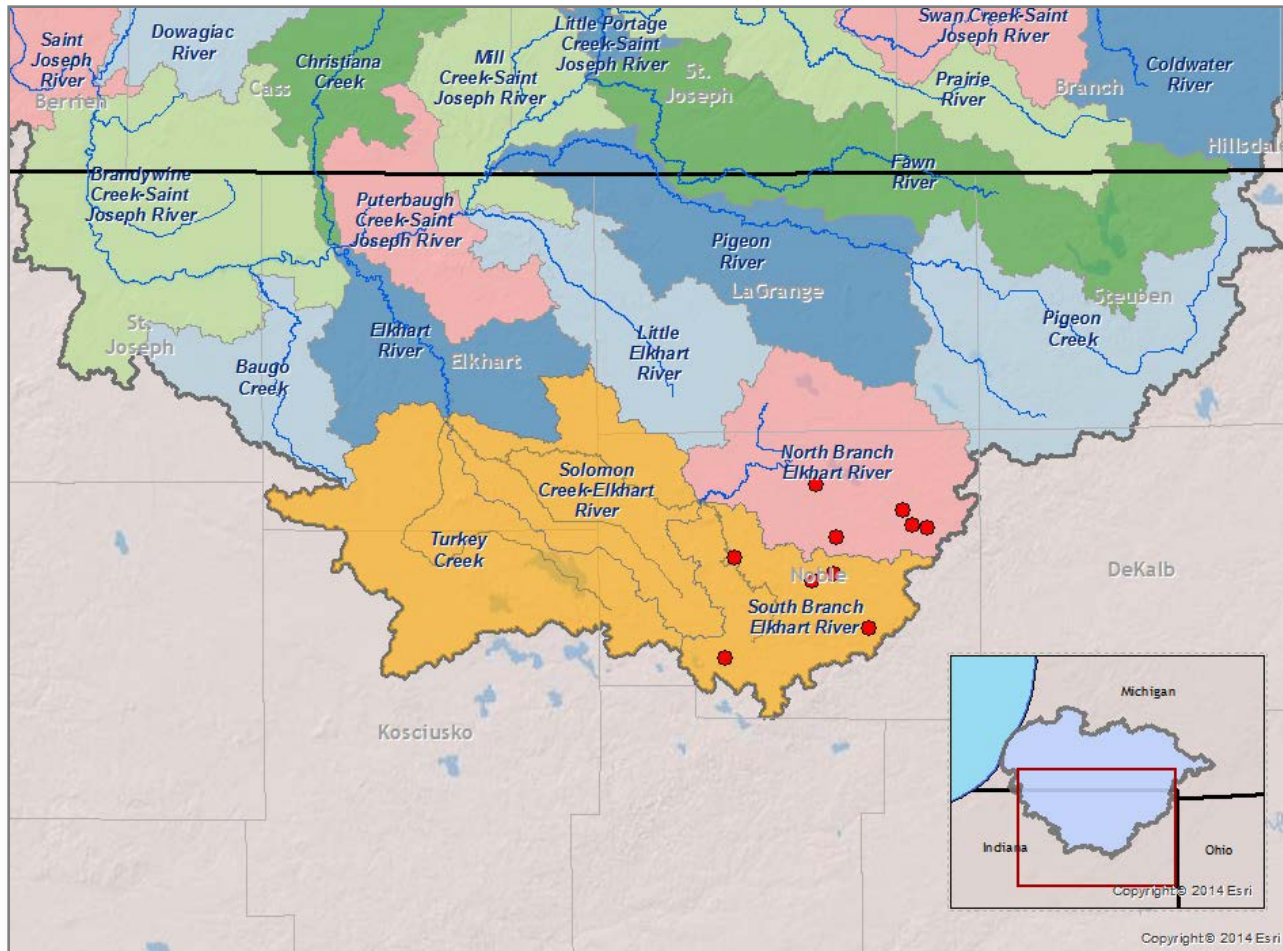
Old Business

- Basin Updates
- New SJRBC Website
- St. Joseph River Basin Filter Strip Initiative
- Regional Conservation Partnership Program
- 2016 IWLA Sponsorship
- **Water Quality Testing Program**

Current Sites



FY16 Proposed Sites



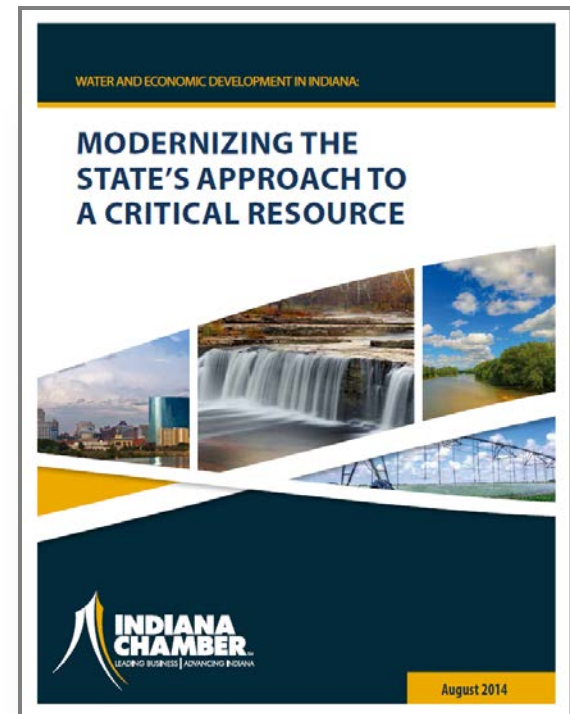
New Business

- LARE Grant Application – Cobus Creek



New Business

- LARE Grant Application – Cobus Creek
- **Water Quantity Initiatives**



New Business

- LARE Grant Application – Cobus Creek
- Water Quantity Initiatives
- **Contracts**



New Business

- LARE Grant Application – Cobus Creek
- Water Quantity Initiatives
- Inter-local Agreement
- **Noble County Lake Gauges**
 - **Mick Newton – Director, Noble County EMA**

WEST LAKES EVACUATION PLAN

Presented by

Noble County Emergency Management
Agency

Sylvan Lake Dam

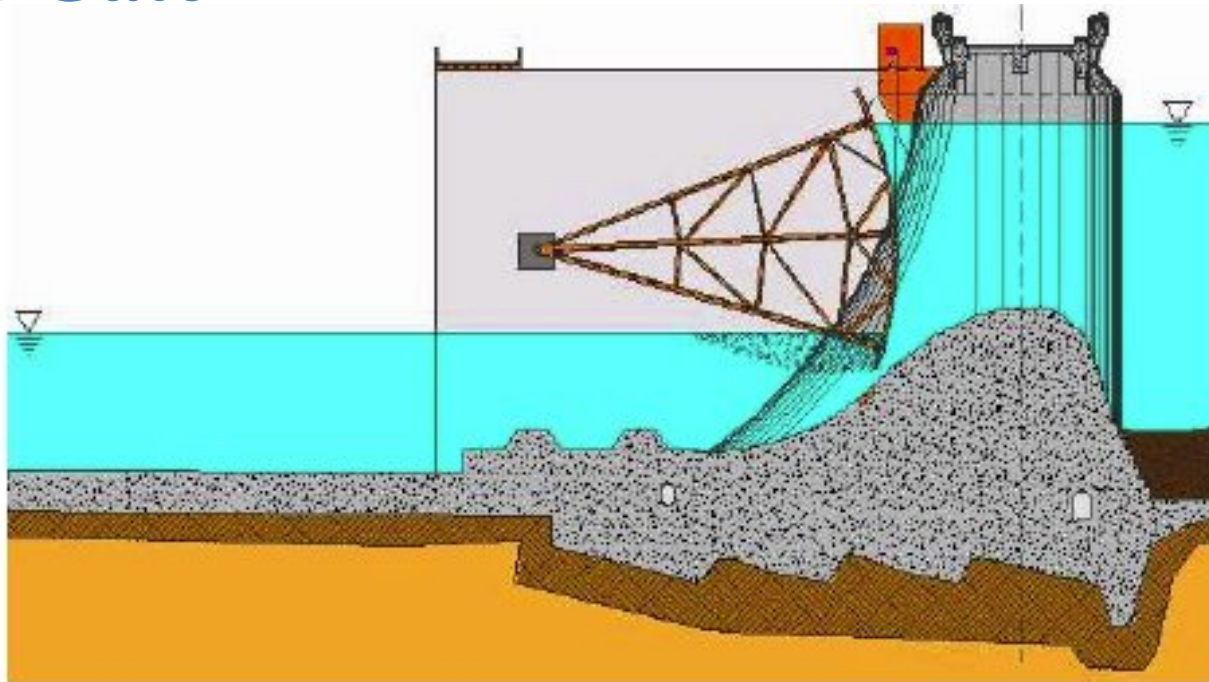


Risk

- **Sylvan Lake Dam Statistics**
 - **630 Acres**
 - **Last Assessment – 2008**
 - **Condition – Fair**
 - **Hazard Classification – High**
 - **Failed 4 times: 1839, 1844, 1855, 1877.**

Emergency Options

Tainter Gate



- **Evacuation of West Lakes Area (First!)**

Emergency Plans

- **Two Separate plans- Same basic purpose**
 - **Sylvan Lake Dam Emergency Action Plan (EAP)**
 - *Rome City Conservancy District Response*
 - *Reduce the risk to life*
 - *(Secondary) minimize property damage*
 - **West lakes Evacuation Plan**
 - *Noble County Sheriff Response*
 - *Provide for the safety of citizens through warning, evacuating, and sheltering*

Unusual Event Detection and Level Determination

- **Unusual Event**

- “An event that takes place or a condition which develops that is not normally encountered in the routine operation of the dam and/or reservoir.”

- **Observation/Detected by:**

- RCCD board members
- Law enforcement
- The public

Unusual Event Detection and Level Determination

- **Event Level Determination by RCCD**
 - **Event Level 3**
 - A slowly developing situation that may endanger the structural integrity of the dam.
 - **Event Level 2**
 - An emergency Event that is defined as rapidly developing and could lead to dam failure
 - **Event Level 1**
 - Imminent dam failure and/or flash flooding downstream

Unusual Event Detection and Level Determination

("PMF" means Probable Maximum Flood)

**TABLE 1.1
EVENT LEVEL DETERMINATION GUIDANCE**

Event	Observation	Event Level
Flooding	Reservoir water surface greater than Elevation 917.5 ft., NGVD (10.5 ft on the staff gage). During the PMF design event, only 2.5 hours remain before the tainter gate is engaged.	3
	Reservoir water surface greater than Elevation 918.0 ft., NGVD (11.0 ft on the staff gage) and rising. During the PMF design event, only 1.5 hours remain before the tainter gate is engaged.	2
	Reservoir water surface greater than Elevation 918.3 ft., NGVD (11.3 ft on the staff gage) and rising. During the PMF design event, only 1 hour remains before the tainter gate is engaged. Flooding of downstream homes is imminent.	1

Sylvan Lake, Apr 30, 2011 – 10.74 ft

(http://waterdata.usgs.gov/in/nwis/uv?site_no=04100180)

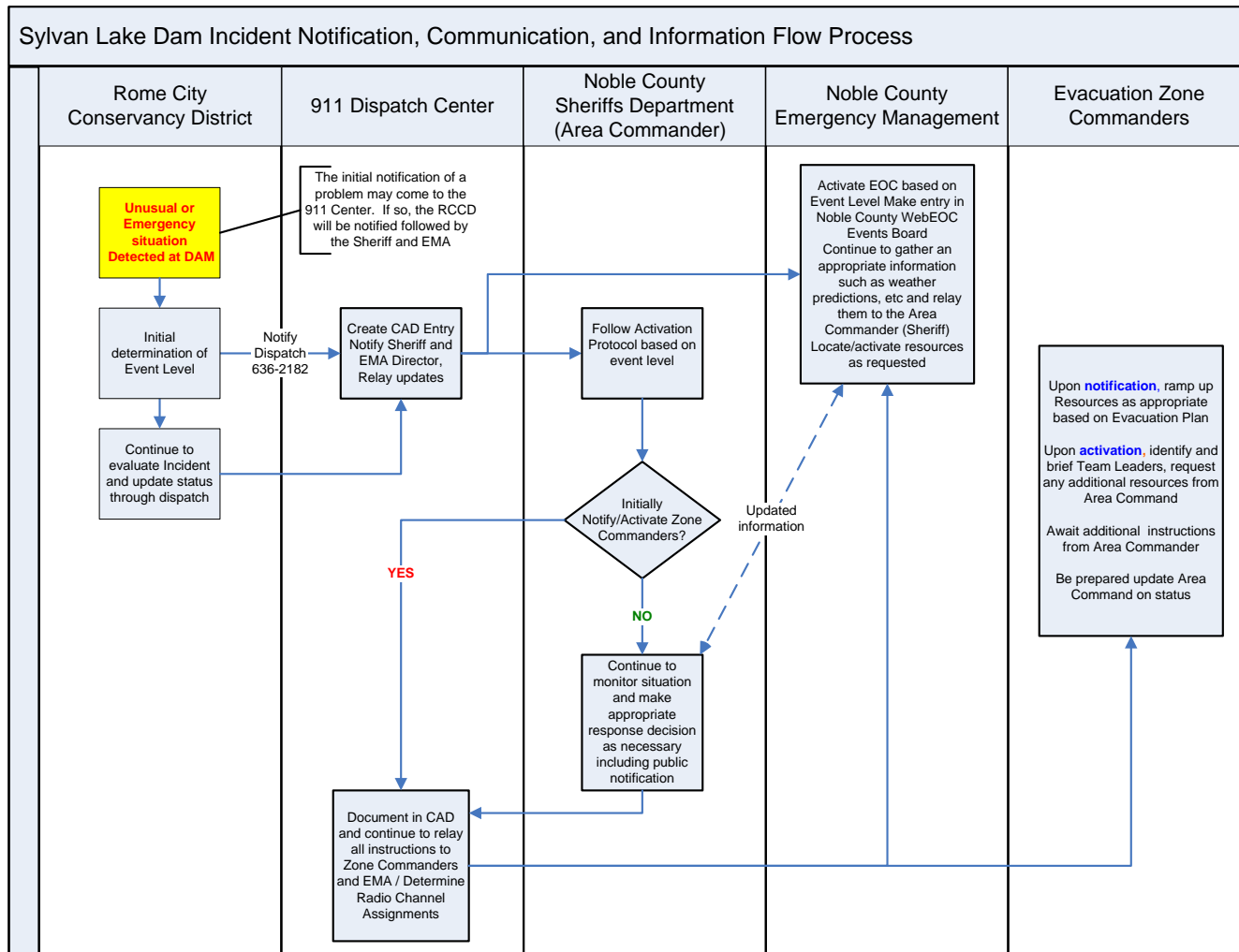
Gage height, feet

Most recent instantaneous value: 10.67 05-01-2011 04:00 EST

USGS 04100180 SYLVAN LAKE AT ROME CITY, IN



Communications Flow Process



Evacuation Plan Check-Lists

Level Three Event

Area Commander

- Receive briefing from the RCCD representative on the situation.
- Contact Zone Incident Commanders and give Briefing and any instructions.
- Contact Emergency Management and:
 - Request entry in Noble County Events Board, WebEOC.
 - Request periodic intelligence reports if available.
- Take any other action deemed necessary.
 - Note: At this level, it is the Area Commanders option to manage this incident remotely as long as proper communications & web-access is available.

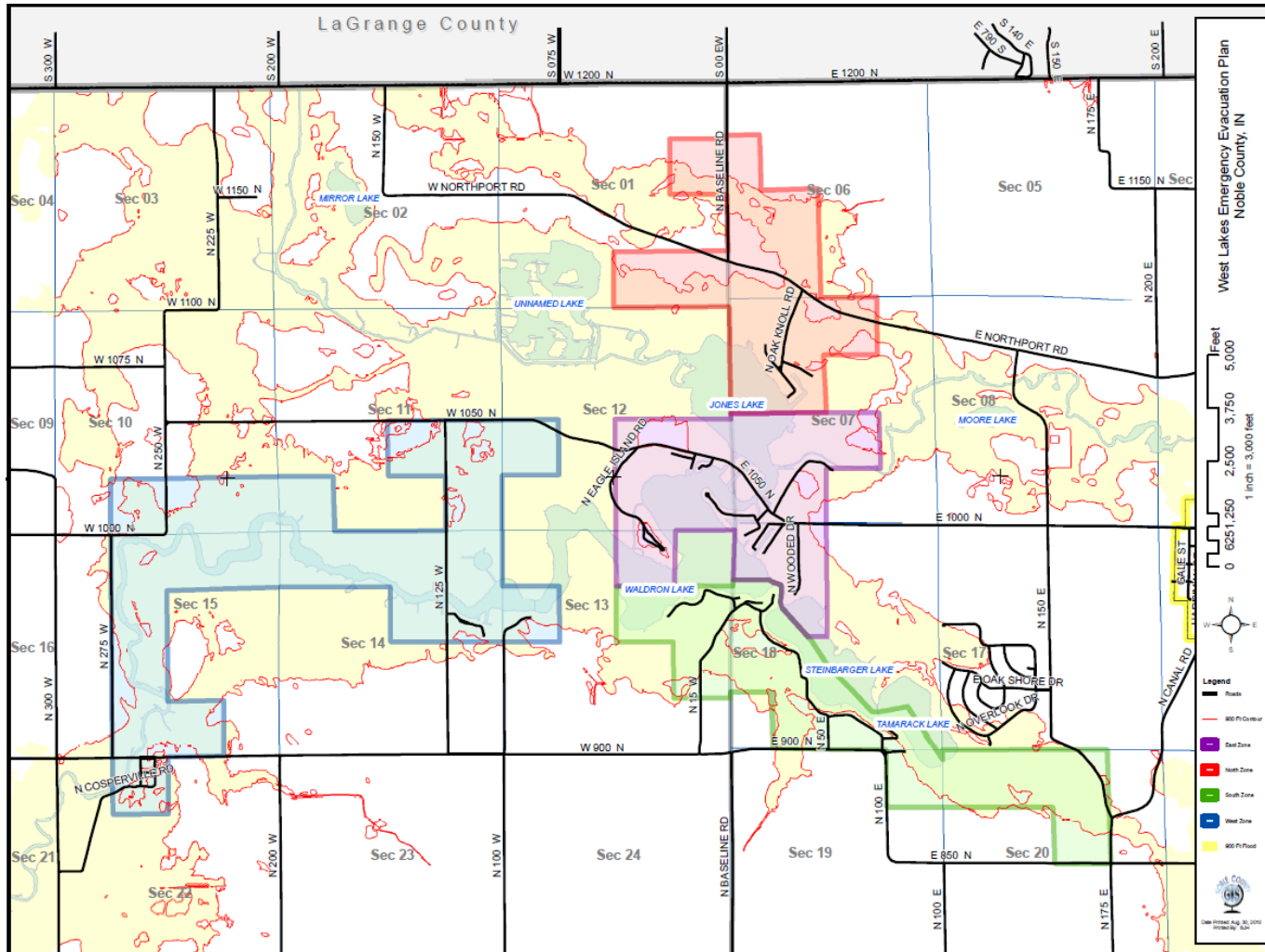
On-call EOC Manager

- Receive briefing from Area Commander.
- Activate EOC to at least a level-4 status, Notify appropriated staff of situation
 - Note: A Level-4 EOC activation may be accomplished remotely as long as proper communications & web-access is available.
- Create incident in Noble County Events Board, WebEOC and update as needed.
- Continue to monitor situation until deactivated by Area Commander.

Determined by RCCD

Gather “**data**”, organize as “**Information**”, from this make a “predication” (**Intelligence**)

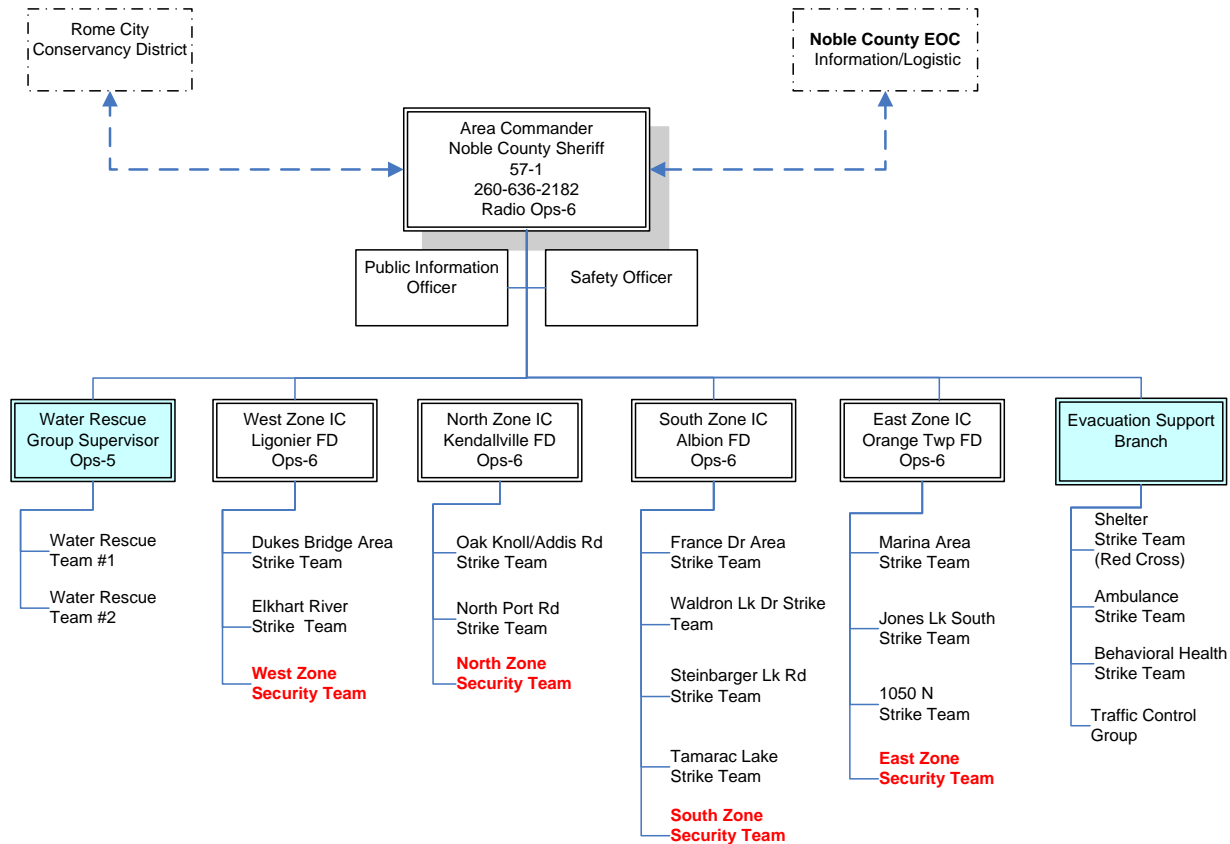
Evacuation Zones



Area Command Organizational Chart

West Lakes Area

Emergency Evacuation Plan
Organizational Chart



Strike-Team Book

WEST LAKES EVACUATION: N STEINBARGER LAKE DR (NORTH AREA)

Date Printed: 10/4/2011

Emergency Management Agency

107 Weber Rd, Albion, IN 46701

Phone: 260-636-2938



House # (Latitude/Longitude)	NAME	EVACUATE?	DESTINATION?	RESPONDER
N STEINBARGER LAKE DR				
9644 N STEINBARGER LAKE DR, 41°29'23.441" / -85°25'12.769"		Y / N		
9662 N STEINBARGER LAKE DR, 41°29'24.204" / -85°25'13.229"		Y / N		
9667 N STEINBARGER LAKE DR, 41°29'23.396" / -85°25'14.422"		Y / N		
9672 N STEINBARGER LAKE DR, 41°29'25.292" / -85°25'13.656"		Y / N		
9680 N STEINBARGER LAKE DR, 41°29'26.445" / -85°25'13.692"		Y / N		
9696 N STEINBARGER LAKE DR, 41°29'26.877" / -85°25'13.667"		Y / N		
9701 N STEINBARGER LAKE DR, 41°29'24.845" / -85°25'14.984"		Y / N		
9710 N STEINBARGER LAKE DR, 41°29'27.604" / -85°25'13.783"		Y / N		
9728 N STEINBARGER LAKE DR, 41°29'28.149" / -85°25'13.270"		Y / N		
9785 N STEINBARGER LAKE DR, 41°29'28.708" / -85°25'16.350"		Y / N		
9790 N STEINBARGER LAKE DR, 41°29'29.522" / -85°25'15.174"		Y / N		
9842 N STEINBARGER LAKE DR		Y / N		

Team Evacuation Tag

EVACUATE!

EMERGENCY CONDITIONS REQUIRE YOU LEAVE
THE AREA IMMEDIATELY!

DETACH THE INSTRUCTIONS BELOW AND LEAVE
REMAINDER OF TAG ON EXTERIOR OF PREMISES.

TURN OFF UTILITIES IF POSSIBLE.
LOCK YOUR DOORS.
BRING ANY MEDICATION YOU REQUIRE.
CONSIDER BRINGING:
BLANKETS, PILLOWS, SPECIAL FOODS, TOILET
ARTICLES, ADEQUATE CLOTHING.

EMERGENCY SHELTER AND INFORMATION
AVAILABLE AT:

NAME: _____

ADDRESS: _____

DESTINATION: _____

CONTACT MADE BY: _____

West Lakes Evacuation Plan

- We have tried to provide you with all the information/tools that you will need
- **It was not our intent to micro-manage you!**
 - The Zone Commander has tactical control of their area and how the evacuation is managed
- The priorities are still:
 - Life Safety (Including Responders)
 - Incident Stabilization
 - Property Preservation

Questions?



DAVE PRESENT

1st Quarter
March 3, 2015



Next Meeting June 2nd, 2015



SJRBC Symposium - May 15th, 2015 - Fernwood Botanical Gardens, Niles, MI